

## GALT RABBIT MAB

**Cat.#:** N263339

**Product Name:** Anti-GALT Rabbit Monoclonal Antibody

**Synonyms:** Gal-1-P uridylyltransferase; UDP-glucose--hexose-1-phosphate uridylyltransferase

**UNIPROT ID:** P07902

**Background:** Galactose-1-phosphate uridyl transferase (GALT) catalyzes the second step of the Leloir pathway of galactose metabolism, namely the conversion of UDP-glucose + galactose-1-phosphate to glucose-1-phosphate + UDP-galactose. The absence of this enzyme results in classic galactosemia in humans and can be fatal in the newborn period if lactose is not removed from the diet. The pathophysiology of galactosemia has not been clearly defined. Two transcript variants encoding different isoforms have been found for this gene.

**Immunogen:** A synthetic peptide of human GALT

**Applications:** WB,IP

**Recommended Dilutions:** WB: 1/500-1/1000 IP: 1/20

**Host Species:** Rabbit

**Clonality:** Rabbit Monoclonal

**Clone ID:** R05-7G7

**MW:** Calculated MW: 43 kDa; Observed MW: 43 kDa

**Isotype:** IgG

**Purification:** Affinity Purified

**Species Reactivity:** Human,Mouse,Rat

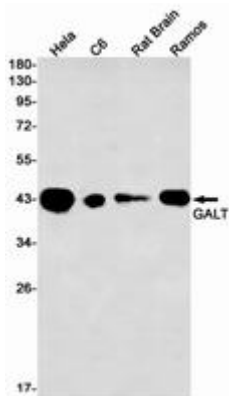
**Conjugation:** Unconjugated

**Modification:** Unmodified

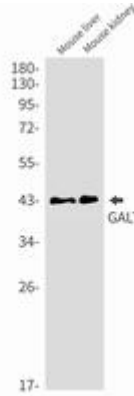
**Constituents:** PBS (without Mg<sup>2+</sup> and Ca<sup>2+</sup>), pH 7.3 containing 50% glycerol, 0.5% BSA and 0.02% sodium azide

**Research Areas:** Signal Transduction

**Storage & Shipping:** Store at -20°C. Avoid repeated freezing and thawing



Western blot analysis of GALT in HeLa, C6, rat Brain, Ramos lysates using GALT antibody.



Western blot analysis of GALT in mouse liver, mouse kidney lysates using GALT antibody.