

GARNL3 RABBIT PAB

Cat.#: S222065

Product Name: Anti-GARNL3 Rabbit Polyclonal Antibody

Synonyms: bA356B19.1

UNIPROT ID: Q5VWW2 (Gene Accession - NP_115669)

Background: The function of this protein remains unknown.

Immunogen: Synthetic peptide of human GARNL3

Applications: ELISA, WB, IHC

Recommended Dilutions: IHC: 30-150;WB: 500-2000;ELISA: 5000-10000

Host Species: Rabbit

Clonality: Rabbit Polyclonal

Isotype: Immunogen-specific rabbit IgG

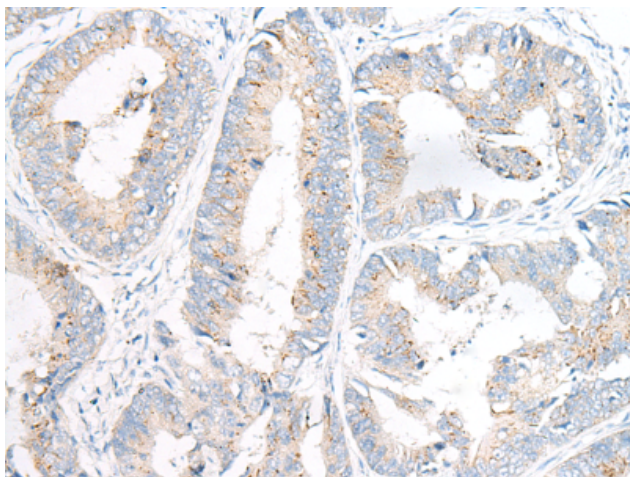
Purification: Antigen affinity purification

Species Reactivity: Human, Mouse

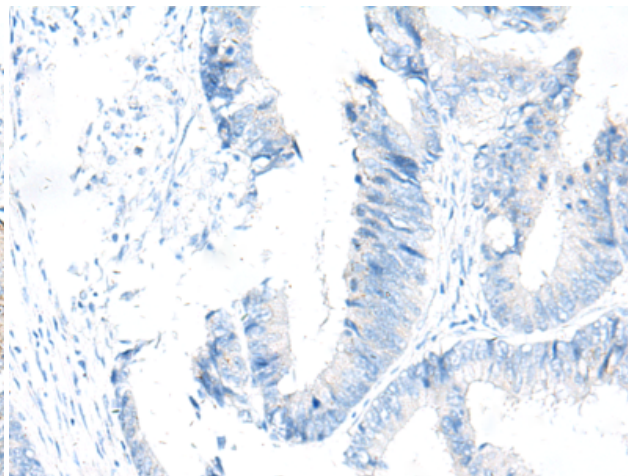
Constituents: PBS (without Mg²⁺ and Ca²⁺), pH 7.4, 150 mM NaCl, 0.05% Sodium Azide and 40% glycerol

Research Areas: Signal Transduction

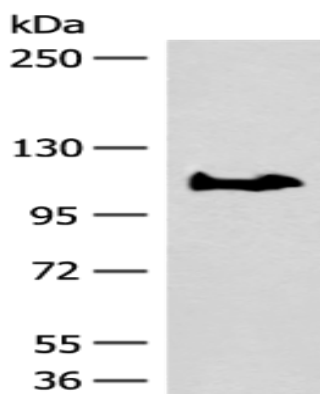
Storage & Shipping: Store at -20°C. Avoid repeated freezing and thawing



Immunohistochemistry analysis of paraffin embedded Human colorectal cancer tissue using 222065(GARNL3 Antibody) at a dilution of 1/100(Cell membrane).



In comparison with the IHC on the left, the same paraffin-embedded Human colorectal cancer tissue is first treated with the synthetic peptide and then with 222065(Anti-GARNL3 Antibody) at dilution 1/100.



Gel: 6%SDS-PAGE, Lysate: 40 μ g;
Lane: PC-3 cell lysate;
Primary antibody: 222065(GARNL3 Antibody)
at dilution 1/400;
Secondary antibody: Goat anti rabbit IgG at
1/8000 dilution;
Exposure time: 1 minute