

GARS1 RABBIT PAB

Cat.#: S212206

Product Name: Anti-GARS1 Rabbit Polyclonal Antibody

Synonyms: GARS; HMN5; CMT2D; DSMAV; GlyRS; SMAD1

UNIPROT ID: P41250 (Gene Accession - BC000065)

Background: This gene encodes glycyl-tRNA synthetase, one of the aminoacyl-tRNA synthetases that charge tRNAs with their cognate amino acids. The encoded enzyme is an (alpha)₂ dimer which belongs to the class II family of tRNA synthetases. It has been shown to be a target of autoantibodies in the human autoimmune diseases, polymyositis or dermatomyositis. Two transcript variants encoding different isoforms have been found for this gene. [provided by RefSeq, Oct 2015]

Immunogen: Fusion protein of human GARS1

Applications: ELISA, WB, IHC

Recommended Dilutions: IHC: 50-300;WB: 500-2000;ELISA: 5000-10000

Host Species: Rabbit

Clonality: Rabbit Polyclonal

Isotype: Immunogen-specific rabbit IgG

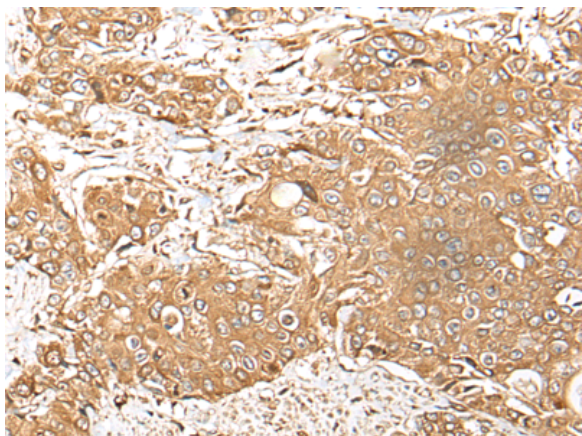
Purification: Antigen affinity purification

Species Reactivity: Human, Mouse, Rat

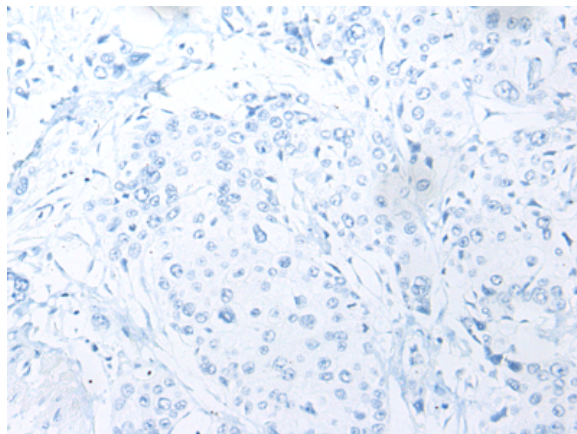
Constituents: PBS (without Mg²⁺ and Ca²⁺), pH 7.4, 150 mM NaCl, 0.05% Sodium Azide and 40% glycerol

Research Areas: Epigenetics and Nuclear Signaling

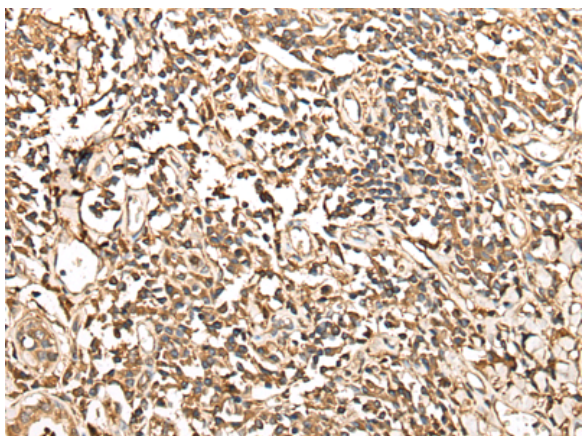
Storage & Shipping: Store at -20°C. Avoid repeated freezing and thawing



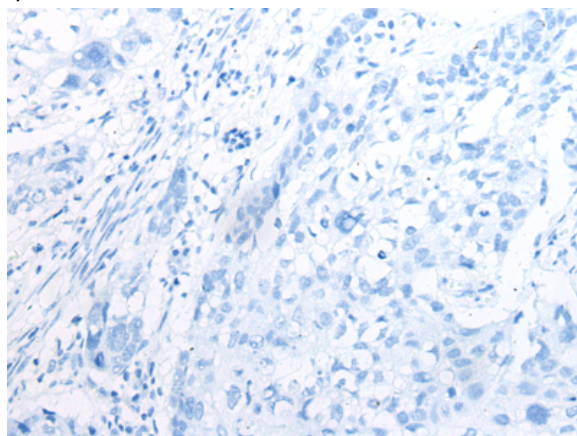
Immunohistochemistry analysis of paraffin embedded Human prostate cancer tissue using 212206 (GAR1 Antibody) at a dilution of 1/60 (Cytoplasm).



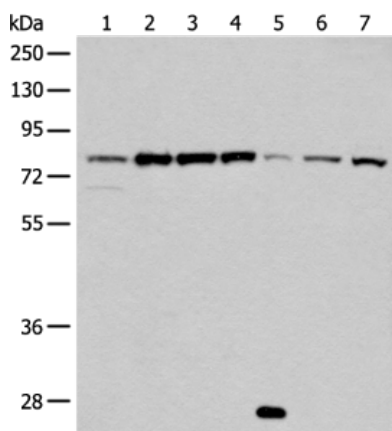
In comparison with the IHC on the left, the same paraffin-embedded Human prostate cancer tissue is first treated with the fusion protein and then with 212206 (Anti-GAR1 Antibody) at dilution 1/60.



The image on the left is immunohistochemistry of paraffin-embedded Human lung cancer tissue using 212206 (Anti-GAR1 Antibody) at a dilution of 1/60.



In comparison with the IHC on the left, the same paraffin-embedded Human lung cancer tissue is first treated with fusion protein and then with D124523 (Anti-GAR1 Antibody) at dilution 1/60.



Gel: 8% SDS-PAGE, Lysate: 40 μ g;
 Lane 1-7: 293T, Jurkat, Raji and HT-29 cell? Mouse brain tissue? A431 and Hela cell lysates;
 Primary antibody: 212206 (GAR1 Antibody) at dilution 1/800;
 Secondary antibody: Goat anti rabbit IgG at 1/8000 dilution;
 Exposure time: 60 seconds



Product Description

Pioneering GTPase and Oncogene Product Development since 2010
