

GASK1A RABBIT PAB

Cat.#: S221805

Product Name: Anti-GASK1A Rabbit Polyclonal Antibody

Synonyms: C3orf41; FAM198A

UNIPROT ID: Q9UFP1 (Gene Accession - NP_001123380)

Background: The function of this protein remains unknown.

Immunogen: Synthetic peptide of human GASK1A

Applications: ELISA, IHC

Recommended Dilutions: IHC: 50-200; ELISA: 5000-10000

Host Species: Rabbit

Clonality: Rabbit Polyclonal

Isotype: Immunogen-specific rabbit IgG

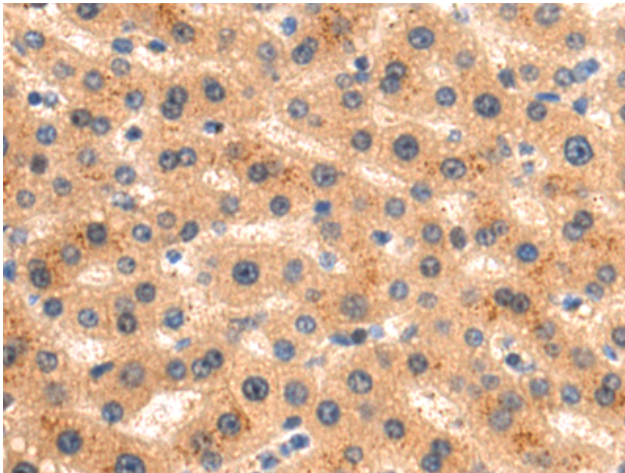
Purification: Antigen affinity purification

Species Reactivity: Human, Mouse

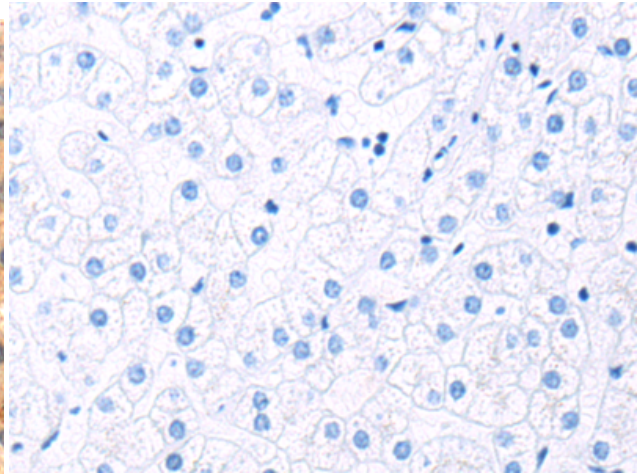
Constituents: PBS (without Mg²⁺ and Ca²⁺), pH 7.4, 150 mM NaCl, 0.05% Sodium Azide and 40% glycerol

Research Areas: Cell Biology

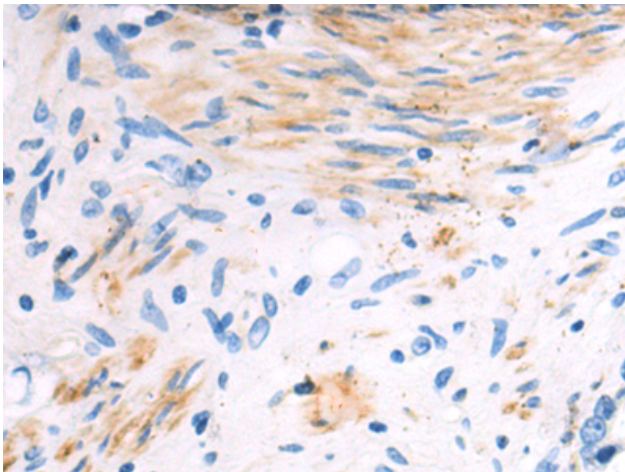
Storage & Shipping: Store at -20°C. Avoid repeated freezing and thawing



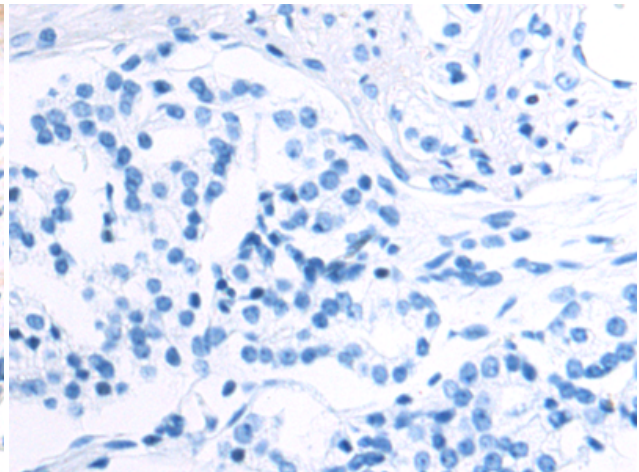
Immunohistochemistry analysis of paraffin embedded Human liver cancer tissue using 221805 (GASK1A Antibody) at a dilution of 1/60 (Cytoplasm).



In comparison with the IHC on the left, the same paraffin-embedded Human liver cancer tissue is first treated with the synthetic peptide and then with 221805 (Anti-GASK1A Antibody) at dilution 1/60.



The image on the left is immunohistochemistry of paraffin-embedded Human prostate cancer tissue using 221805 (Anti-GASK1A Antibody) at a dilution of 1/60.



In comparison with the IHC on the left, the same paraffin-embedded Human prostate cancer tissue is first treated with synthetic peptide and then with D263559 (Anti-GASK1A Antibody) at dilution 1/60.