

GATA1 RABBIT MAB

Cat.#: N261558

Product Name: Anti-GATA1 Rabbit Monoclonal Antibody

Synonyms: GATA1; ERYF1; GF1; Erythroid transcription factor; Eryf1; GATA-binding factor 1; GATA-1; GF-1; NF-E1 DNA-binding protein

UNIPROT ID: P15976

Background: GATA-1 is the founding member of the GATA family and is required for erythroid and megakaryocytic cell development. Mutations in GATA-1 have been linked to many human diseases, including acute megakaryoblastic leukemia in Down syndrome children (DS-AMKL), X-linked thrombocytopenia, and gray platelet syndrome.

Immunogen: Recombinant protein of human GATA1

Applications: WB, ICC/IF, IP, CHIP

Recommended Dilutions: WB: 1/500-1/1000 IF: 1/50-1/200 IP: 1/20 CHIP: 1/20

Host Species: Rabbit

Clonality: Rabbit Monoclonal

Clone ID: R06-5C3

MW: Calculated MW: 43 kDa; Observed MW: 43 kDa

Isotype: IgG

Purification: Affinity Purified

Species Reactivity: Human

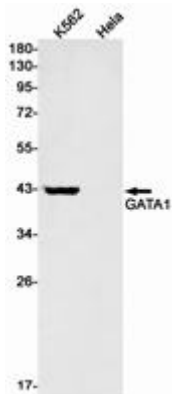
Conjugation: Unconjugated

Modification: Unmodified

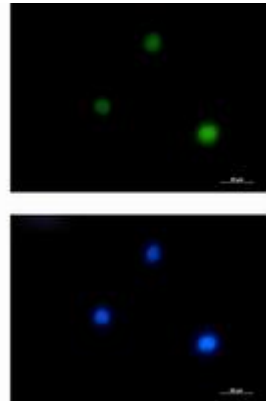
Constituents: PBS (without Mg²⁺ and Ca²⁺), pH 7.3 containing 50% glycerol, 0.5% BSA and 0.02% sodium azide

Research Areas: Epigenetics and Nuclear Signaling

Storage & Shipping: Store at -20°C. Avoid repeated freezing and thawing



Western blot analysis of GATA1 in K562, HeLa lysates using GATA1 antibody.



Immunocytochemistry analysis of GATA1 (green) in K562 using GATA1 antibody, and DAPI (blue).