

GATA6 RABBIT PAB

Cat.#: S219801

Product Name: Anti-GATA6 Rabbit Polyclonal Antibody

Synonyms:

UNIPROT ID: Q92908 (Gene Accession - NP_005248)

Background: This gene is a member of a small family of zinc finger transcription factors that play an important role in the regulation of cellular differentiation and organogenesis during vertebrate development. This gene is expressed during early embryogenesis and localizes to endo- and mesodermally derived cells during later embryogenesis and thereby plays an important role in gut, lung, and heart development. Mutations in this gene are associated with several congenital defects.

Immunogen: Synthetic peptide of human GATA6

Applications: ELISA, IHC

Recommended Dilutions: IHC: 50-200; ELISA: 1000-10000

Host Species: Rabbit

Clonality: Rabbit Polyclonal

Isotype: Immunogen-specific rabbit IgG

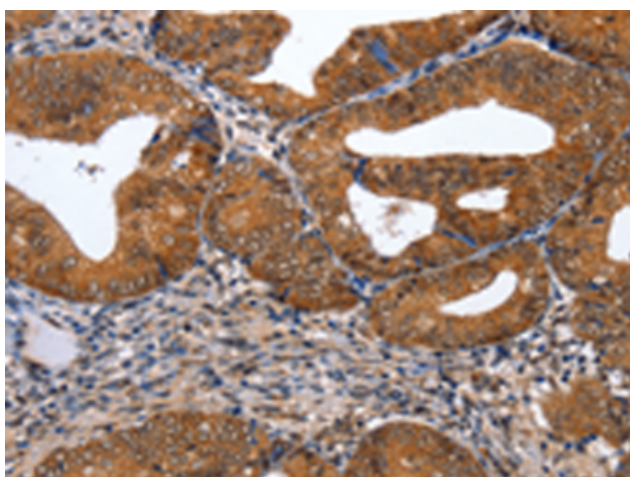
Purification: Antigen affinity purification

Species Reactivity: Human, Mouse, Rat

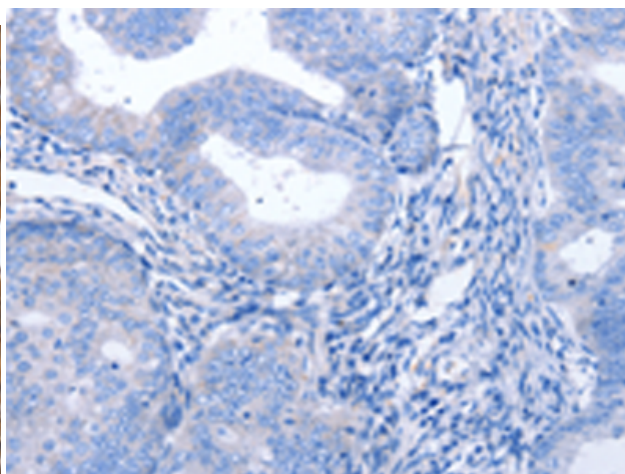
Constituents: PBS (without Mg²⁺ and Ca²⁺), pH 7.4, 150 mM NaCl, 0.05% Sodium Azide and 40% glycerol

Research Areas: Epigenetics and Nuclear Signaling, Cancer, Cardiovascular

Storage & Shipping: Store at -20°C. Avoid repeated freezing and thawing



Immunohistochemistry analysis of paraffin embedded Human cervical cancer tissue using 219801(GATA6 Antibody) at a dilution of 1/35(Cytoplasm, Nucleus).



In comparison with the IHC on the left, the same paraffin-embedded Human cervical cancer tissue is first treated with the synthetic peptide and then with 219801(Anti-GATA6 Antibody) at dilution 1/35.