

GATD3B RABBIT PAB

Cat.#: S218408

Product Name: Anti-GATD3B Rabbit Polyclonal Antibody

Synonyms: KNP-I

UNIPROT ID: A0A0B4J2D5 (Gene Accession - BC003587)

Background: May play a role in promoting mitochondrial enlargement in cone photoreceptor cells.

Immunogen: Fusion protein of human GATD3B

Applications: ELISA, WB, IHC

Recommended Dilutions: IHC: 30-150;WB: 500-2000;ELISA: 5000-10000

Host Species: Rabbit

Clonality: Rabbit Polyclonal

Isotype: Immunogen-specific rabbit IgG

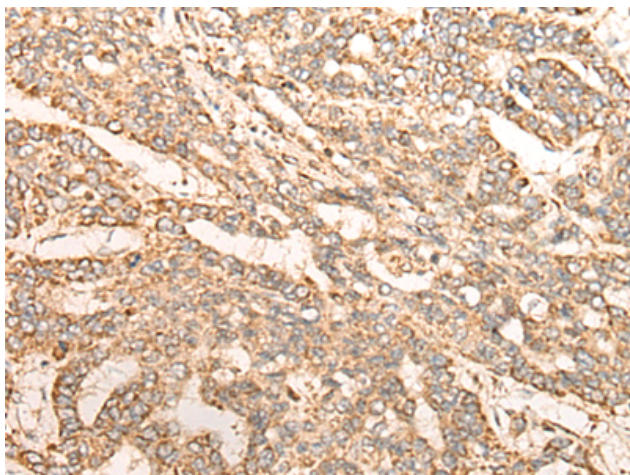
Purification: Antigen affinity purification

Species Reactivity: Human

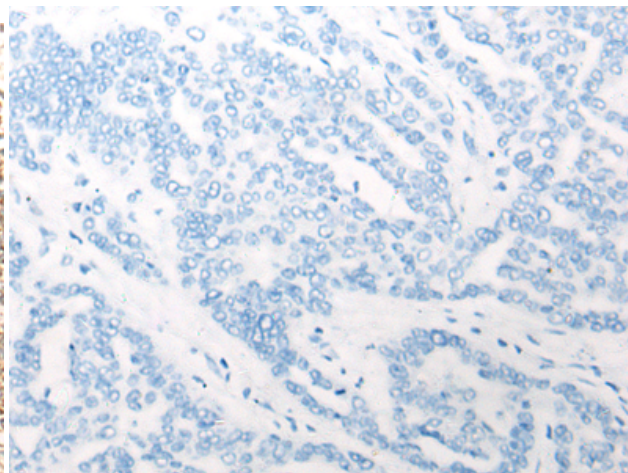
Constituents: PBS (without Mg²⁺ and Ca²⁺), pH 7.4, 150 mM NaCl, 0.05% Sodium Azide and 40% glycerol

Research Areas: Cell Biology

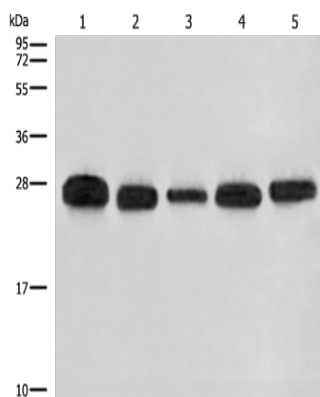
Storage & Shipping: Store at -20°C. Avoid repeated freezing and thawing



Immunohistochemistry analysis of paraffin embedded Human liver cancer tissue using 218408(GATD3B Antibody) at a dilution of 1/35(Cytoplasm).



In comparison with the IHC on the left, the same paraffin-embedded Human liver cancer tissue is first treated with the fusion protein and then with 218408(Anti-GATD3B Antibody) at dilution 1/35.



Gel: 12%SDS-PAGE, Lysate: 40 μ g;
Lane 1-5: 293T, A549, HeLa, K562 and HEPG2 cell lysates;
Primary antibody: 218408(GATD3B Antibody) at dilution 1/400;
Secondary antibody: Goat anti rabbit IgG at 1/8000 dilution;
Exposure time: 1 second