

GBP4 RABBIT PAB

Cat.#: S222069

Product Name: Anti-GBP4 Rabbit Polyclonal Antibody

Synonyms: Mpa2

UNIPROT ID: Q96PP9 (Gene Accession - NP_443173)

Background: Guanylate-binding proteins, such as GBP4, are induced by interferon and hydrolyze GTP to both GDP and GMP (Vestal, 2005 [PubMed 16108726]). Plays a role in erythroid differentiation.

Immunogen: Synthetic peptide of human GBP4

Applications: ELISA, IHC

Recommended Dilutions: IHC: 40-200; ELISA: 5000-10000

Host Species: Rabbit

Clonality: Rabbit Polyclonal

Isotype: Immunogen-specific rabbit IgG

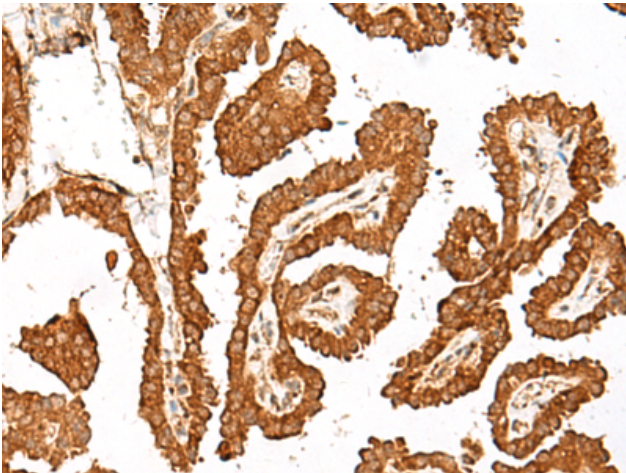
Purification: Antigen affinity purification

Species Reactivity: Human

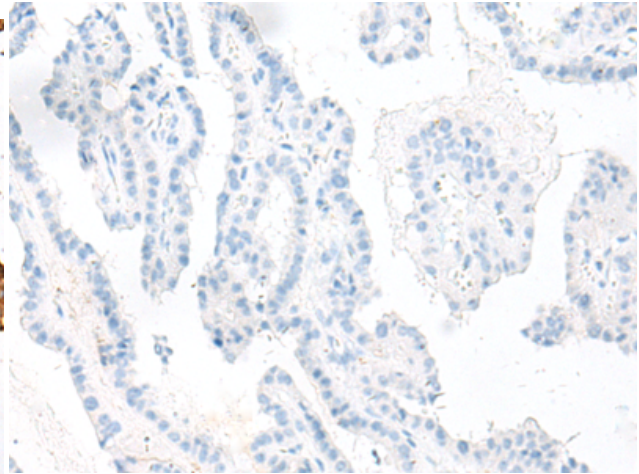
Constituents: PBS (without Mg²⁺ and Ca²⁺), pH 7.4, 150 mM NaCl, 0.05% Sodium Azide and 40% glycerol

Research Areas: Signal Transduction

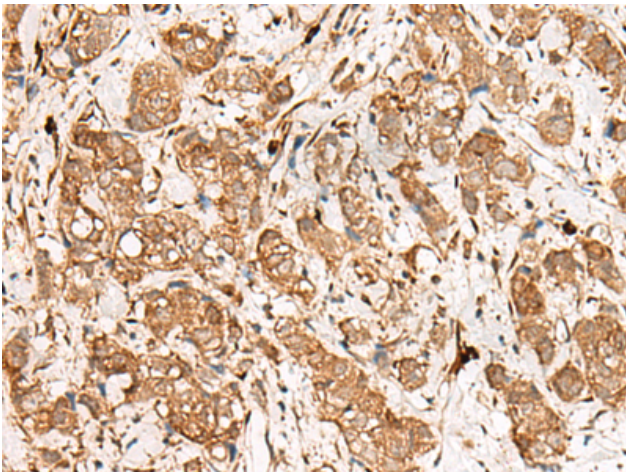
Storage & Shipping: Store at -20°C. Avoid repeated freezing and thawing



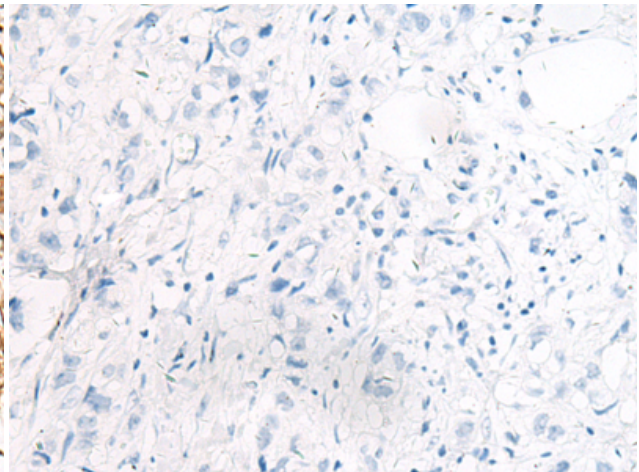
Immunohistochemistry analysis of paraffin embedded Human thyroid cancer tissue using 222069 (GBP4 Antibody) at a dilution of 1/45 (Cytoplasm and Nucleus).



In comparison with the IHC on the left, the same paraffin-embedded Human thyroid cancer tissue is first treated with the synthetic peptide and then with 222069 (Anti-GBP4 Antibody) at dilution 1/45.



The image on the left is immunohistochemistry of paraffin-embedded Human breast cancer tissue using 222069 (Anti-GBP4 Antibody) at a dilution of 1/45.



In comparison with the IHC on the left, the same paraffin-embedded Human breast cancer tissue is first treated with synthetic peptide and then with D263971 (Anti-GBP4 Antibody) at dilution 1/45.