

GC1Q R RABBIT MAB

Cat.#: N263343

Product Name: Anti-GC1q R Rabbit Monoclonal Antibody

Synonyms: C1QBP; GC1QBP; HABP1; SF2P32; Complement component 1 Q subcomponent-binding protein; mitochondrial; GC1q-R protein; Glycoprotein gC1qBP; C1qBP; Hyaluronan-binding protein 1; Mitochondrial matrix protein p32; p33

UNIPROT ID: Q07021

Background: Binds to the globular "heads" of C1Q thus inhibiting C1 activation.

Immunogen: Recombinant protein of human GC1q R

Applications: WB, ICC/IF

Recommended Dilutions: WB: 1/500-1/1000 IF: 1/50-1/200

Host Species: Rabbit

Clonality: Rabbit Monoclonal

Clone ID: R04-8F2

MW: Calculated MW: 31 kDa; Observed MW: 31 kDa

Isotype: IgG

Purification: Affinity Purified

Species Reactivity: Human

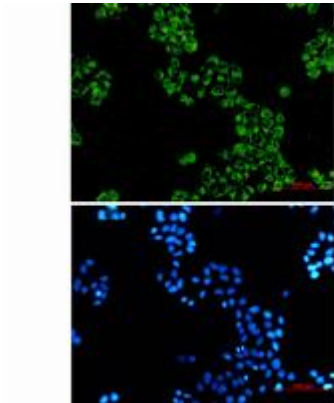
Conjugation: Unconjugated

Modification: Unmodified

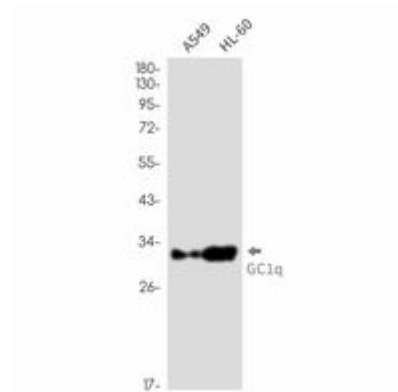
Constituents: PBS (without Mg²⁺ and Ca²⁺), pH 7.3 containing 50% glycerol, 0.5% BSA and 0.02% sodium azide

Research Areas: Epigenetics and Nuclear Signaling

Storage & Shipping: Store at -20°C. Avoid repeated freezing and thawing



Immunocytochemistry analysis of GC1q R (green) in hela using GC1q R antibody, and DAPI (blue)



Western blot analysis of GC1q R in A549, HL-60 lysates using GC1q R antibody.