

GCH1 RABBIT PAB

Cat.#: S219841

Product Name: Anti-GCH1 Rabbit Polyclonal Antibody

Synonyms: GCH, DYT5, DYT14, DYT5a, GTPCHI, HPABH4B, GTP-CH-1

UNIPROT ID: P30793 (Gene Accession - NP_001019242)

Background: This gene encodes a member of the GTP cyclohydrolase family. The encoded protein is the first and rate-limiting enzyme in tetrahydrobiopterin (BH4) biosynthesis, catalyzing the conversion of GTP into 7,8-dihydroneopterin triphosphate. BH4 is an essential cofactor required by aromatic amino acid hydroxylases as well as nitric oxide synthases. Mutations in this gene are associated with malignant hyperphenylalaninemia and dopa-responsive dystonia. Several alternatively spliced transcript variants encoding different isoforms have been described; however, not all variants give rise to a functional enzyme.

Immunogen: Synthetic peptide of human GCH1

Applications: ELISA, WB, IHC

Recommended Dilutions: IHC: 20-May;WB: 500-2000;ELISA: 1000-5000

Host Species: Rabbit

Clonality: Rabbit Polyclonal

Isotype: Immunogen-specific rabbit IgG

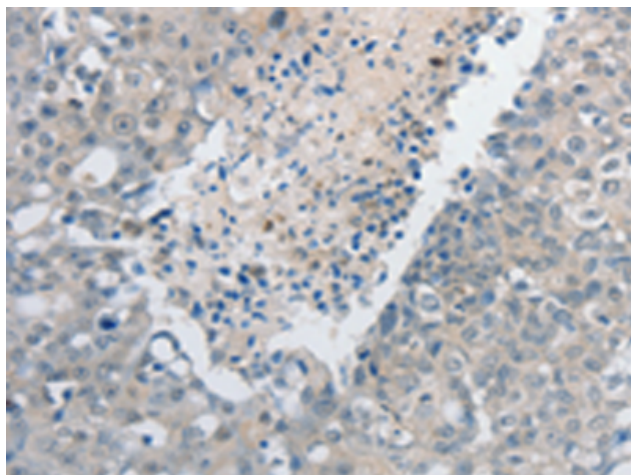
Purification: Antigen affinity purification

Species Reactivity: Human

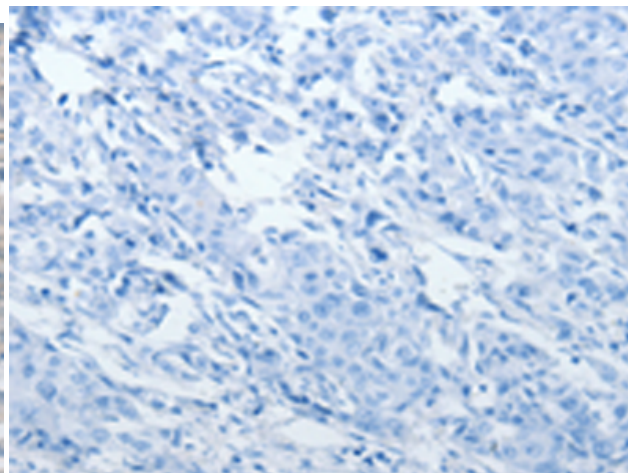
Constituents: PBS (without Mg²⁺ and Ca²⁺), pH 7.4, 150 mM NaCl, 0.05% Sodium Azide and 40% glycerol

Research Areas: Metabolism, Signal Transduction, Cell Biology, Neuroscience

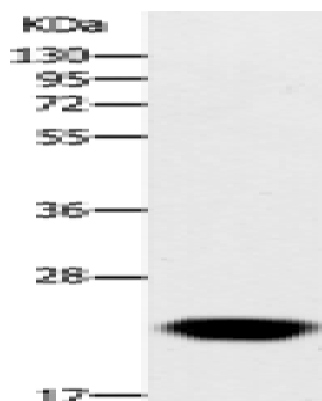
Storage & Shipping: Store at -20°C. Avoid repeated freezing and thawing



Immunohistochemistry analysis of paraffin embedded Human breast cancer tissue using 219841(GCH1 Antibody) at a dilution of 1/15(Cytoplasm).



In comparison with the IHC on the left, the same paraffin-embedded Human breast cancer tissue is first treated with the synthetic peptide and then with 219841(Anti-GCH1 Antibody) at dilution 1/15.



Gel: 12%SDS-PAGE, Lysate: 60 µg;
Lane: Human fetal liver tissue;
Primary antibody: 219841(GCH1 Antibody) at dilution 1/200;
Secondary antibody: Goat anti rabbit IgG at 1/8000 dilution;
Exposure time: 15 seconds