

## GCLC RABBIT MAB

**Cat.#:** N262264

**Product Name:** Anti-GCLC Rabbit Monoclonal Antibody

**Synonyms:** GCLC; GLCL; GLCLC; Glutamate--cysteine ligase catalytic subunit; GCS heavy chain; Gamma-ECS; Gamma-glutamylcysteine synthetase

**UNIPROT ID:** P48506

**Background:** Sulfur metabolism; glutathione biosynthesis; glutathione from L-cysteine and L-glutamate: step 1/2.

**Immunogen:** A synthetic peptide of human GCLC

**Applications:** WB,IP

**Recommended Dilutions:** WB: 1/500-1/1000 IP: 1/20

**Host Species:** Rabbit

**Clonality:** Rabbit Monoclonal

**Clone ID:** R08-2F5

**MW:** Calculated MW: 73 kDa; Observed MW: 73 kDa

**Isotype:** IgG

**Purification:** Affinity Purified

**Species Reactivity:** Mouse,Rat

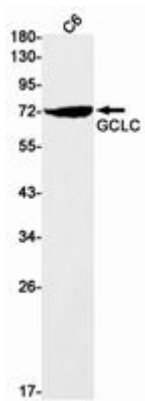
**Conjugation:** Unconjugated

**Modification:** Unmodified

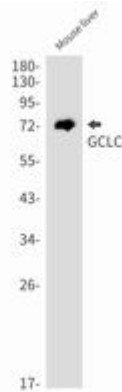
**Constituents:** PBS (without Mg<sup>2+</sup> and Ca<sup>2+</sup>), pH 7.3 containing 50% glycerol, 0.5% BSA and 0.02% sodium azide

**Research Areas:** Signal Transduction

**Storage & Shipping:** Store at -20°C. Avoid repeated freezing and thawing



Western blot analysis of GCLC in C6 lysates using GCLC antibody.



Western blot analysis of GCLC in mouse liver lysates using GCLC antibody.