

## GCLC RABBIT PAB

**Cat.#:** S211955

**Product Name:** Anti-GCLC Rabbit Polyclonal Antibody

**Synonyms:** GCL; GCS; GLCL; GLCLC

**UNIPROT ID:** P48506 (Gene Accession - BC022487 )

**Background:** Glutamate-cysteine ligase, also known as gamma-glutamylcysteine synthetase is the first rate-limiting enzyme of glutathione synthesis. The enzyme consists of two subunits, a heavy catalytic subunit and a light regulatory subunit. This locus encodes the catalytic subunit, while the regulatory subunit is derived from a different gene located on chromosome 1p22-p21. Mutations at this locus have been associated with hemolytic anemia due to deficiency of gamma-glutamylcysteine synthetase and susceptibility to myocardial infarction.

**Immunogen:** Fusion protein of human GCLC

**Applications:** ELISA, WB, IHC

**Recommended Dilutions:** IHC: 50-200;WB: 500-2000;ELISA: 5000-10000

**Host Species:** Rabbit

**Clonality:** Rabbit Polyclonal

**Isotype:** Immunogen-specific rabbit IgG

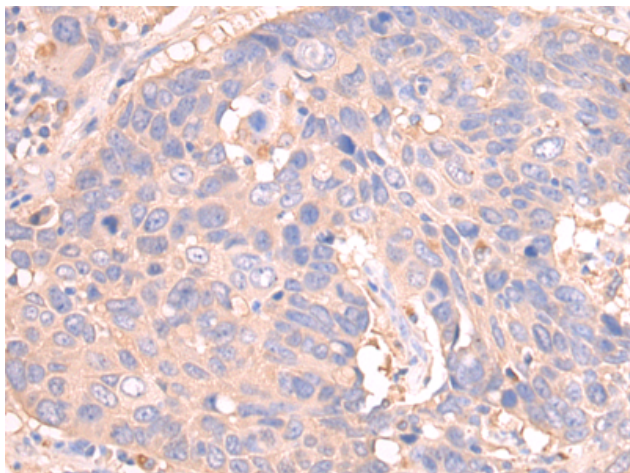
**Purification:** Antigen affinity purification

**Species Reactivity:** Human, Mouse, Rat

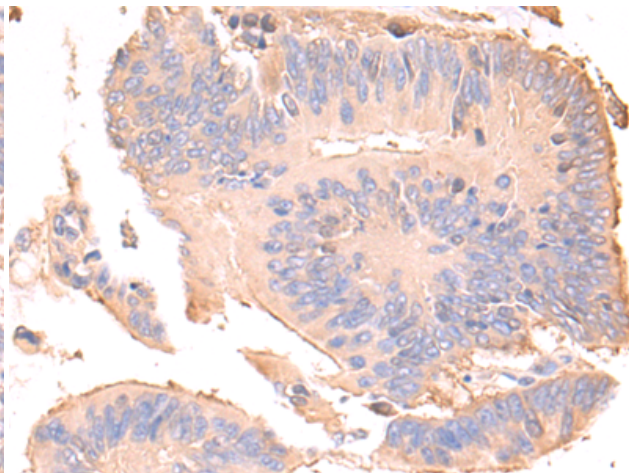
**Constituents:** PBS (without Mg<sup>2+</sup> and Ca<sup>2+</sup>), pH 7.4, 150 mM NaCl, 0.05% Sodium Azide and 40% glycerol

**Research Areas:** Metabolism, Cell Biology

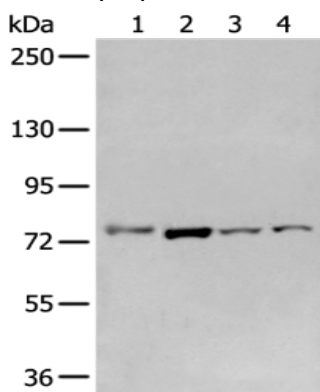
**Storage & Shipping:** Store at -20°C. Avoid repeated freezing and thawing



Immunohistochemistry analysis of paraffin-embedded Human lung cancer tissue using 211955(GCLC Antibody) at a dilution of 1/35(Cytoplasm).



Immunohistochemistry analysis of paraffin-embedded Human colorectal cancer tissue using 211955(Anti-GCLC Antibody) at a dilution of 1/35.



Gel: 6%SDS-PAGE, Lysate: 40  $\mu$ g;  
Lane 1-4: Raw264.7, A549, Hepg2 and Jurkat cell lysates;  
Primary antibody: 211955(GCLC Antibody) at dilution 1/800;  
Secondary antibody: Goat anti rabbit IgG at 1/8000 dilution;  
Exposure time: 30 seconds