

## GCM2 RABBIT PAB

**Cat.#:** N225233

**Product Name:** Anti-GCM2 Rabbit pAb

**Synonyms:** Chorion-specific transcription factor GCMb (hGCMb; GCM motif protein 2; Glial cells missing homolog 2)

**UNIPROT ID:** O75603

**Background:** Transcription factor that binds specific sequences on gene promoters and activate their transcription.

**Immunogen:** Synthesized peptide derived from human GCM2. at AA range: 21-70

**Applications:** WB,ELISA

**Recommended Dilutions:** WB: 1/500-1/1000 ELISA: 1/10000

**Host Species:** Rabbit

**Clonality:** Rabbit Polyclonal

**Clone ID:** -

**MW:** Calculated MW: 57 kDa; Observed MW: 57 kDa

**Isotype:** IgG

**Purification:** Affinity Purified

**Species Reactivity:** Human,Mouse,Rat

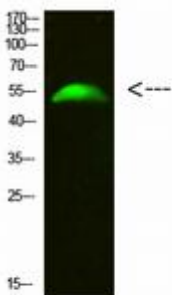
**Conjugation:** Unconjugated

**Modification:** Unmodified

**Constituents:** PBS (without Mg<sup>2+</sup> and Ca<sup>2+</sup>), pH 7.3 containing 50% glycerol, 0.5% BSA and 0.02% sodium azide

**Research Areas:** Stem Cells

**Storage & Shipping:** Store at -20°C. Avoid repeated freezing and thawing



Western blot analysis of GCM2 in 293T lysates using GCM2 antibody.



# Product Description

Pioneering GTPase and Oncogene Product Development since 2010

---