

## GDF10 RABBIT PAB

**Cat.#:** S221242

**Product Name:** Anti-GDF10 Rabbit Polyclonal Antibody

**Synonyms:** BIP; BMP3B; BMP-3b

**UNIPROT ID:** P55107 (Gene Accession - NP\_004953 )

**Background:** This gene encodes a secreted ligand of the TGF-beta (transforming growth factor-beta) superfamily of proteins. Ligands of this family bind various TGF-beta receptors leading to recruitment and activation of SMAD family transcription factors that regulate gene expression. The encoded preproprotein is proteolytically processed to generate each subunit of the disulfide-linked homodimer. This promotes neural repair after stroke. Additionally, this protein may act as a tumor suppressor and reduced expression of this gene is associated with oral cancer.

**Immunogen:** Synthetic peptide of human GDF10

**Applications:** ELISA, IHC

**Recommended Dilutions:** IHC: 25-50; ELISA: 5000-10000

**Host Species:** Rabbit

**Clonality:** Rabbit Polyclonal

**Isotype:** Immunogen-specific rabbit IgG

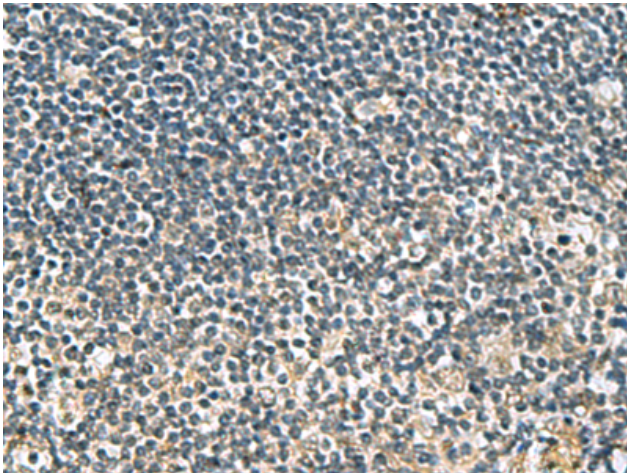
**Purification:** Antigen affinity purification

**Species Reactivity:** Human, Mouse, Rat

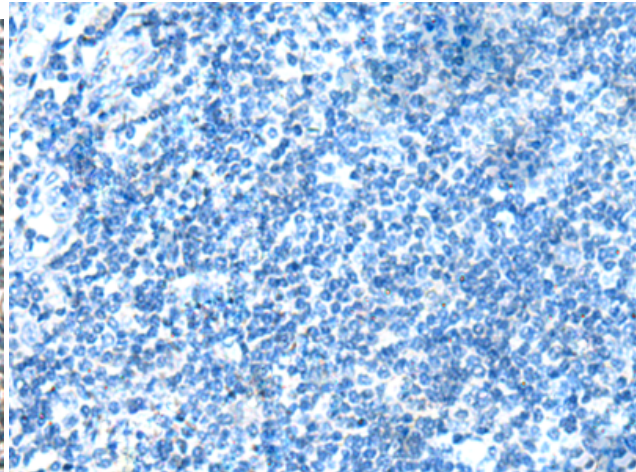
**Constituents:** PBS (without Mg<sup>2+</sup> and Ca<sup>2+</sup>), pH 7.4, 150 mM NaCl, 0.05% Sodium Azide and 40% glycerol

**Research Areas:** Signal Transduction, Cancer, Stem Cells

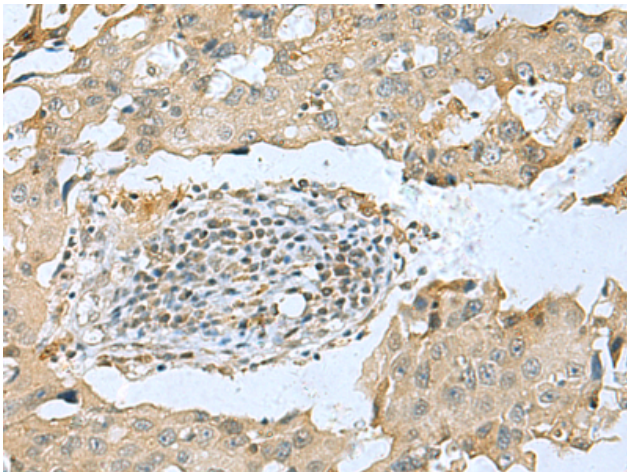
**Storage & Shipping:** Store at -20°C. Avoid repeated freezing and thawing



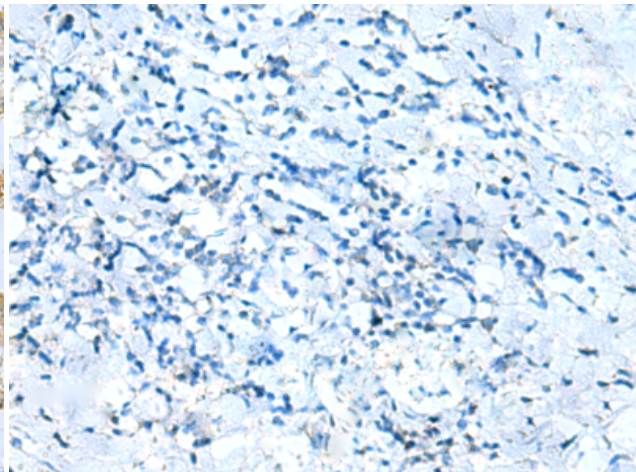
Immunohistochemistry analysis of paraffin embedded Human tonsil tissue using 221242(GDF10 Antibody) at a dilution of 1/30(Cytoplasm).



In comparison with the IHC on the left, the same paraffin-embedded Human tonsil tissue is first treated with the synthetic peptide and then with 221242(Anti-GDF10 Antibody) at dilution 1/30.



The image on the left is immunohistochemistry of paraffin-embedded Human breast cancer tissue using 221242(Anti-GDF10 Antibody) at a dilution of 1/30.



In comparison with the IHC on the left, the same paraffin-embedded Human breast cancer tissue is first treated with synthetic peptide and then with D262756(Anti-GDF10 Antibody) at dilution 1/30.