

GDF15 RABBIT PAB

Cat.#: N226009

Product Name: Anti-GDF15 Rabbit pAb

Synonyms: GDF15; MIC1; PDF; PLAB; PTGFB; Growth/differentiation factor 15; GDF-15; Macrophage inhibitory cytokine 1; MIC-1; NSAID-activated gene 1 protein; NAG-1; NSAID-regulated gene 1 protein; NRG-1; Placental TGF-beta; Placental bone morphogenetic

UNIPROT ID: Q99988

Background: Highly expressed in placenta, with lower levels in prostate and colon and some expression in kidney.

Immunogen: Recombinant protein of human GDF15

Applications: IP, WB

Recommended Dilutions: WB: 1/500-1/1000 IP: 1/20

Host Species: Rabbit

Clonality: Rabbit Polyclonal

Clone ID: -

MW: Calculated MW: 34 kDa; Observed MW: 35,13 kDa

Isotype: IgG

Purification: Affinity Purified

Species Reactivity: Human

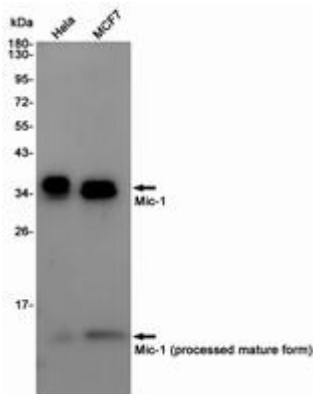
Conjugation: Unconjugated

Modification: Unmodified

Constituents: PBS (without Mg²⁺ and Ca²⁺), pH 7.3 containing 50% glycerol, 0.5% BSA and 0.02% sodium azide

Research Areas: Cell Biology

Storage & Shipping: Store at -20°C. Avoid repeated freezing and thawing



Western blot analysis of GDF15/Mic1 in HeLa, MCF-7 lysates using GDF15 antibody.