

## GDF2 RABBIT PAB

**Cat.#:** S220073

**Product Name:** Anti-GDF2 Rabbit Polyclonal Antibody

**Synonyms:** BMP9; HHT5; BMP-9

**UNIPROT ID:** Q9UK05 (Gene Accession - NP\_057288 )

**Background:** The protein encoded by this gene is a member of the bone morphogenetic protein (BMP) family and the TGF-beta superfamily. This group of proteins is characterized by a polybasic proteolytic processing site which is cleaved to produce a mature protein containing seven conserved cysteine residues. The members of this family are regulators of cell growth and differentiation in both embryonic and adult tissues. Studies in rodents suggest that this protein plays a role in the adult liver and in differentiation of cholinergic central nervous system neurons. Mutations in this gene are associated with hereditary hemorrhagic telangiectasia.

**Immunogen:** Synthetic peptide of human GDF2

**Applications:** ELISA, WB, IHC

**Recommended Dilutions:** IHC: 50-200;WB: 200-1000;ELISA: 2000-5000

**Host Species:** Rabbit

**Clonality:** Rabbit Polyclonal

**Isotype:** Immunogen-specific rabbit IgG

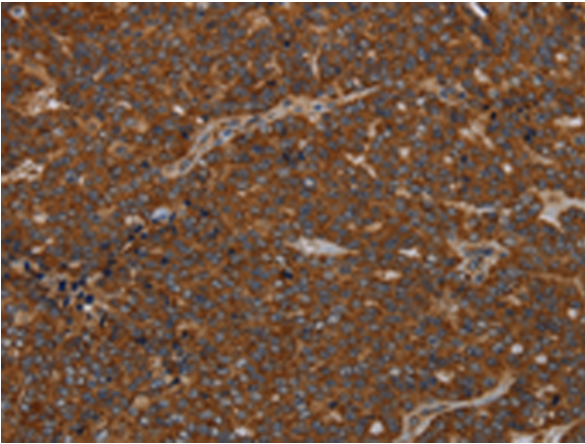
**Purification:** Antigen affinity purification

**Species Reactivity:** Human, Mouse

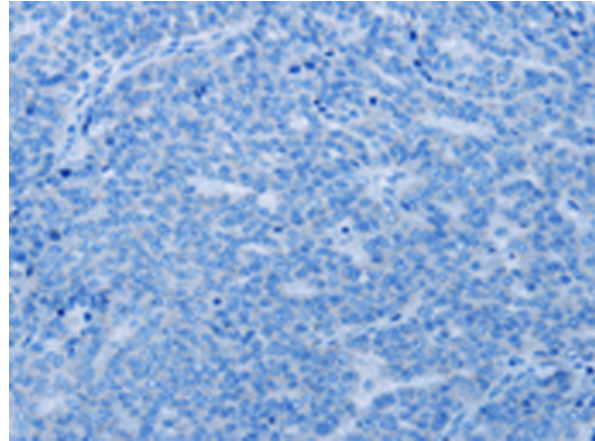
**Constituents:** PBS (without Mg<sup>2+</sup> and Ca<sup>2+</sup>), pH 7.4, 150 mM NaCl, 0.05% Sodium Azide and 40% glycerol

**Research Areas:** Signal Transduction, Cancer

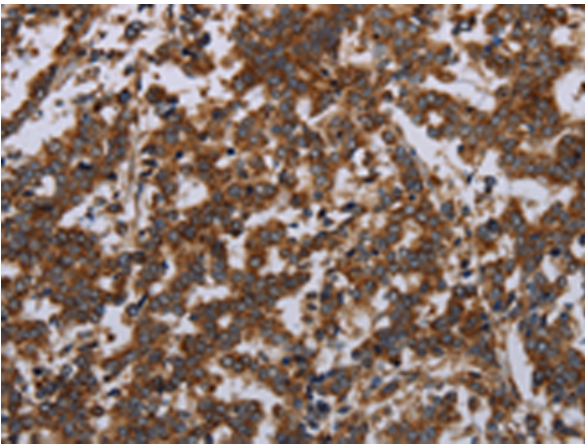
**Storage & Shipping:** Store at -20°C. Avoid repeated freezing and thawing



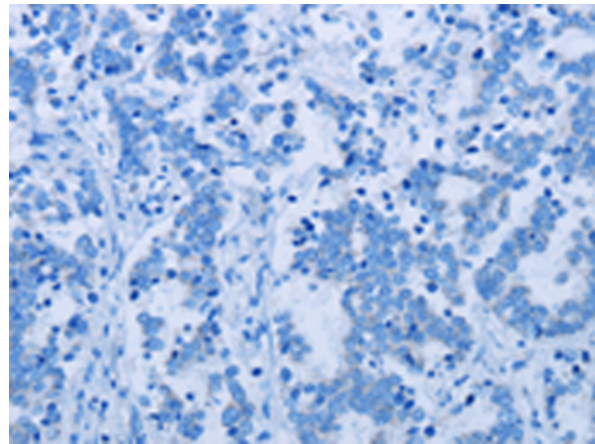
Immunohistochemistry analysis of paraffin embedded Human ovarian cancer tissue using 220073(GDF2 Antibody) at a dilution of 1/40(Cytoplasm).



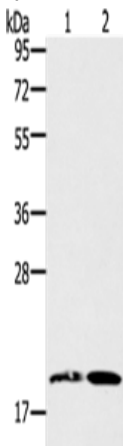
In comparison with the IHC on the left, the same paraffin-embedded Human ovarian cancer tissue is first treated with the synthetic peptide and then with 220073(Anti-GDF2 Antibody) at dilution 1/40.



The image on the left is immunohistochemistry of paraffin-embedded Human liver cancer tissue using 220073(Anti-GDF2 Antibody) at a dilution of 1/40.



In comparison with the IHC on the left, the same paraffin-embedded Human liver cancer tissue is first treated with synthetic peptide and then with D260908(Anti-GDF2 Antibody) at dilution 1/40.



Gel: 8%SDS-PAGE, Lysate: 40 µg;  
Lane 1-2: Mouse heart tissue, Mouse liver tissue;  
Primary antibody: 220073(GDF2 Antibody) at dilution 1/200;  
Secondary antibody: Goat anti rabbit IgG at 1/8000 dilution;  
Exposure time: 40 seconds



# Product Description

Pioneering GTPase and Oncogene Product Development since 2010

---