

GELSOLIN RABBIT MAB

Cat.#: N262268

Product Name: Anti-Gelsolin Rabbit Monoclonal Antibody

Synonyms: ADF; AGEL; Brevin; Gelsolin; Gsn

UNIPROT ID: P06396

Background: Calcium-regulated, actin-modulating protein that binds to the plus (or barbed) ends of actin monomers or filaments, preventing monomer exchange (end-blocking or capping). It can promote the assembly of monomers into filaments (nucleation) as well as sever filaments already formed. Plays a role in ciliogenesis.

Immunogen: A synthetic peptide of human Gelsolin

Applications: WB,IHC-F,IHC-P,ICC/IF

Recommended Dilutions: WB: 1/500-1/1000 IHC: 1/50-1/100 IF: 1/50-1/200

Host Species: Rabbit

Clonality: Rabbit Monoclonal

Clone ID: R06-4B4

MW: Calculated MW: 86 kDa; Observed MW: 86 kDa

Isotype: IgG

Purification: Affinity Purified

Species Reactivity: Human,Mouse

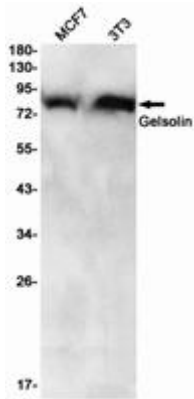
Conjugation: Unconjugated

Modification: Unmodified

Constituents: PBS (without Mg²⁺ and Ca²⁺), pH 7.3 containing 50% glycerol, 0.5% BSA and 0.02% sodium azide

Research Areas: Signal Transduction

Storage & Shipping: Store at -20°C. Avoid repeated freezing and thawing



Western blot analysis of Gelsolin in MCF-7, 3T3 lysates using Gelsolin antibody.