

## GELSOLIN RABBIT MAB

**Cat.#:** N262267

**Product Name:** Anti-Gelsolin Rabbit Monoclonal Antibody

**Synonyms:** ADF; AGEL; Brevin; Gelsolin; Gsn

**UNIPROT ID:** P06396

**Background:** Calcium-regulated, actin-modulating protein that binds to the plus (or barbed) ends of actin monomers or filaments, preventing monomer exchange (end-blocking or capping). It can promote the assembly of monomers into filaments (nucleation) as well as sever filaments already formed. Plays a role in ciliogenesis.

**Immunogen:** A synthetic peptide of human Gelsolin

**Applications:** WB,IHC-P,IP

**Recommended Dilutions:** WB: 1/500-1/1000 IHC: 1/50-1/100 IP: 1/20

**Host Species:** Rabbit

**Clonality:** Rabbit Monoclonal

**Clone ID:** R06-2I7

**MW:** Calculated MW: 86 kDa; Observed MW: 86 kDa

**Isotype:** IgG

**Purification:** Affinity Purified

**Species Reactivity:** Human,Rat

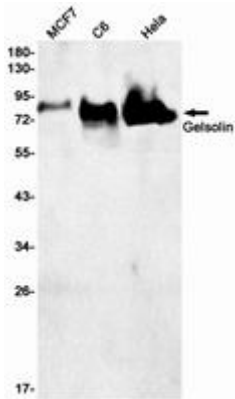
**Conjugation:** Unconjugated

**Modification:** Unmodified

**Constituents:** PBS (without Mg<sup>2+</sup> and Ca<sup>2+</sup>), pH 7.3 containing 50% glycerol, 0.5% BSA and 0.02% sodium azide

**Research Areas:** Signal Transduction

**Storage & Shipping:** Store at -20°C. Avoid repeated freezing and thawing



Western blot analysis of Gelsolin in MCF-7, C6, HeLa lysates using Gelsolin antibody.