

GEMIN6 RABBIT PAB

Cat.#: S219416

Product Name: Anti-GEMIN6 Rabbit Polyclonal Antibody

Synonyms:

UNIPROT ID: Q8WXD5 (Gene Accession - BC018195)

Background: GEMIN6 is part of a large macromolecular complex localized to both the cytoplasm and the nucleus, that plays a role in the cytoplasmic assembly of small nuclear ribonucleoproteins (snRNPs). Other members of this complex include SMN (MIM 600354), GEMIN2 (SIPI; MIM 602595), GEMIN3 (DDX20; MIM 606168), GEMIN4 (MIM 606969), and GEMIN5 (MIM 607005). [supplied by OMIM, Jul 2002]

Immunogen: Fusion protein of human GEMIN6

Applications: ELISA, IHC

Recommended Dilutions: IHC: 100-300; ELISA: 5000-10000

Host Species: Rabbit

Clonality: Rabbit Polyclonal

Isotype: Immunogen-specific rabbit IgG

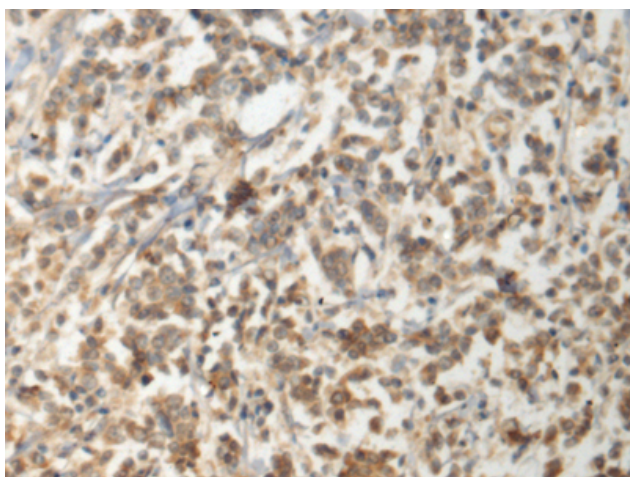
Purification: Antigen affinity purification

Species Reactivity: Human, Mouse

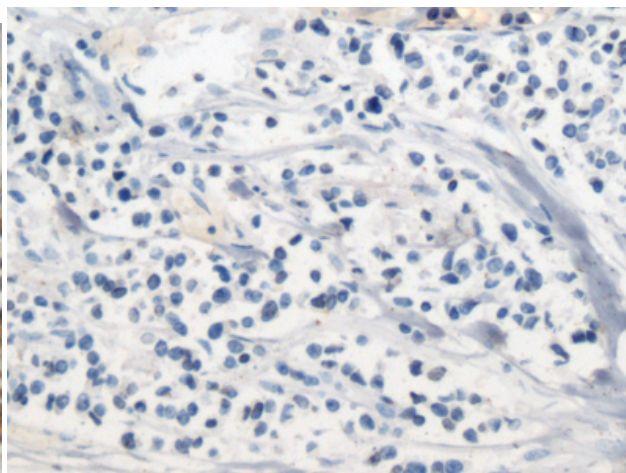
Constituents: PBS (without Mg²⁺ and Ca²⁺), pH 7.4, 150 mM NaCl, 0.05% Sodium Azide and 40% glycerol

Research Areas: Epigenetics and Nuclear Signaling

Storage & Shipping: Store at -20°C. Avoid repeated freezing and thawing



Immunohistochemistry analysis of paraffin embedded Human breast cancer tissue using 219416(GEMIN6 Antibody) at a dilution of 1/110(Cytoplasm).



In comparison with the IHC on the left, the same paraffin-embedded Human breast cancer tissue is first treated with the fusion protein and then with 219416(Anti-GEMIN6 Antibody) at dilution 1/110.