

## GFAP RABBIT MAB

**Cat.#:** N261659

**Product Name:** Anti-GFAP Rabbit Monoclonal Antibody

**Synonyms:** GFAP; FLJ45472; cb345; ALXDRD

**UNIPROT ID:** P14136

**Background:** GFAP is commonly used as a marker for intracranial and intraspinal tumors arising from astrocytes. In addition, GFAP intermediate filaments are also present in nonmyelin-forming Schwann cells in the peripheral nervous system

**Immunogen:** A synthetic peptide of human GFAP

**Applications:** WB,IHC-F,IHC-P,ICC/IF

**Recommended Dilutions:** WB: 1/500-1/1000 IHC: 1/50-1/100 IF: 1/50-1/200

**Host Species:** Rabbit

**Clonality:** Rabbit Monoclonal

**Clone ID:** R05-9H9

**MW:** Calculated MW: 50 kDa; Observed MW: 50 kDa

**Isotype:** IgG

**Purification:** Affinity Purified

**Species Reactivity:** Human,Rat

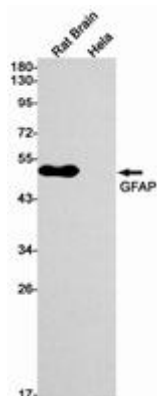
**Conjugation:** Unconjugated

**Modification:** Unmodified

**Constituents:** PBS (without Mg<sup>2+</sup> and Ca<sup>2+</sup>), pH 7.3 containing 50% glycerol, 0.5% BSA and 0.02% sodium azide

**Research Areas:** Neuroscience Astrocytes

**Storage & Shipping:** Store at -20°C. Avoid repeated freezing and thawing



Western blot analysis of GFAP in rat Brain, HeLa lysates using GFAP antibody.



# Product Description

Pioneering GTPase and Oncogene Product Development since 2010

---