

GFAP RABBIT PAB

Cat.#: S210337

Product Name: Anti-GFAP Rabbit Polyclonal Antibody

Synonyms: ALXDRD

UNIPROT ID: P14136 (Gene Accession - BC013596)

Background: This gene encodes one of the major intermediate filament proteins of mature astrocytes. It is used as a marker to distinguish astrocytes from other glial cells during development. Mutations in this gene cause Alexander disease, a rare disorder of astrocytes in the central nervous system. Alternative splicing results in multiple transcript variants encoding distinct isoforms.

Immunogen: Fusion protein of human GFAP

Applications: ELISA, IHC

Recommended Dilutions: IHC: 25-100; ELISA: 5000-10000

Host Species: Rabbit

Clonality: Rabbit Polyclonal

Isotype: Immunogen-specific rabbit IgG

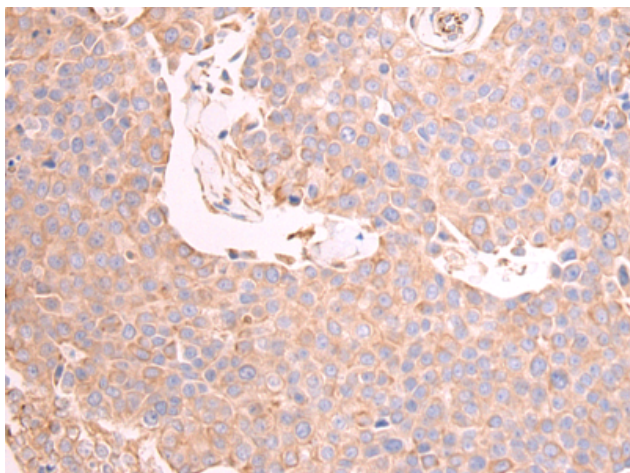
Purification: Antigen affinity purification

Species Reactivity: Human, Mouse, Rat


Constituents: PBS (without Mg²⁺ and Ca²⁺), pH 7.4, 150 mM NaCl, 0.05% Sodium Azide and 40% glycerol

Research Areas: Signal Transduction, Neuroscience, Stem Cells, Cell Markers

Storage & Shipping: Store at -20°C. Avoid repeated freezing and thawing



Immunohistochemistry analysis of paraffin-embedded Human breast cancer tissue using 210337(GFAP Antibody) at a dilution of 1/25(Cytoplasm).

 Immunohistochemistry analysis of paraffin-embedded Human esophagus cancer tissue using 210337(Anti-GFAP Antibody) at a dilution of 1/25.