

GFRA3 RABBIT PAB

Cat.#: S219819

Product Name: Anti-GFRA3 Rabbit Polyclonal Antibody

Synonyms: GDNFR3

UNIPROT ID: O60609 (Gene Accession - NP_001487)

Background: The protein encoded by this gene is a glycosylphosphatidylinositol(GPI)-linked cell surface receptor and a member of the GDNF receptor family. It forms a signaling receptor complex with RET tyrosine kinase receptor and binds the ligand, artemin.

Immunogen: Synthetic peptide of human GFRA3

Applications: ELISA, IHC

Recommended Dilutions: IHC: 50-200; ELISA: 500-1000

Host Species: Rabbit

Clonality: Rabbit Polyclonal

Isotype: Immunogen-specific rabbit IgG

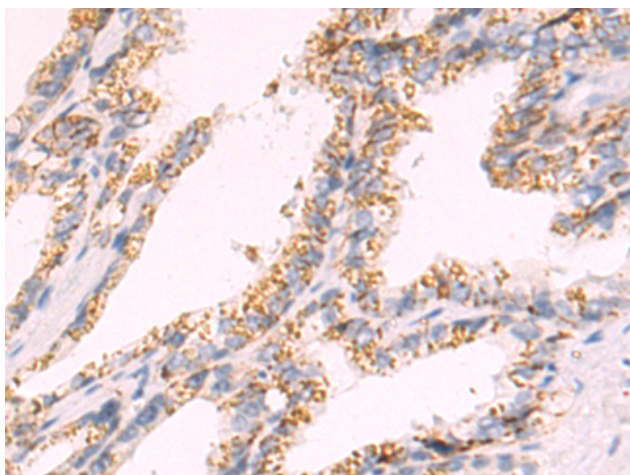
Purification: Antigen affinity purification

Species Reactivity: Human, Mouse

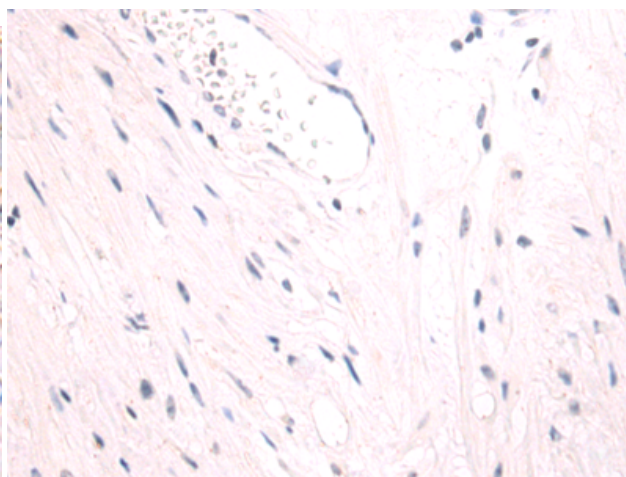
Constituents: PBS (without Mg²⁺ and Ca²⁺), pH 7.4, 150 mM NaCl, 0.05% Sodium Azide and 40% glycerol

Research Areas: Neuroscience

Storage & Shipping: Store at -20°C. Avoid repeated freezing and thawing



Immunohistochemistry analysis of paraffin embedded Human prostate cancer tissue using 219819(GFRA3 Antibody) at a dilution of 1/50(Cytoplasm).



In comparison with the IHC on the left, the same paraffin-embedded Human prostate cancer tissue is first treated with the synthetic peptide and then with 219819(Anti-GFRA3 Antibody) at dilution 1/50.