

## GFRA4 RABBIT PAB

**Cat.#:** S213747

**Product Name:** Anti-GFRA4 Rabbit Polyclonal Antibody

**Synonyms:**

**UNIPROT ID:** Q9GZZ7 (Gene Accession - NP\_071422 )

**Background:** The protein encoded by this gene is a member of the GDNF receptor family. It is a glycosylphosphatidylinositol(GPI)-linked cell surface receptor for persephin, and mediates activation of the RET tyrosine kinase receptor. This gene is a candidate gene for RET-associated diseases. Alternatively spliced transcript variants encoding different isoforms have been described for this gene.

**Immunogen:** Synthetic peptide of human GFRA4

**Applications:** ELISA, WB, IHC

**Recommended Dilutions:** IHC: 50-100;WB: 500-2000;ELISA: 5000-10000

**Host Species:** Rabbit

**Clonality:** Rabbit Polyclonal

**Isotype:** Immunogen-specific rabbit IgG

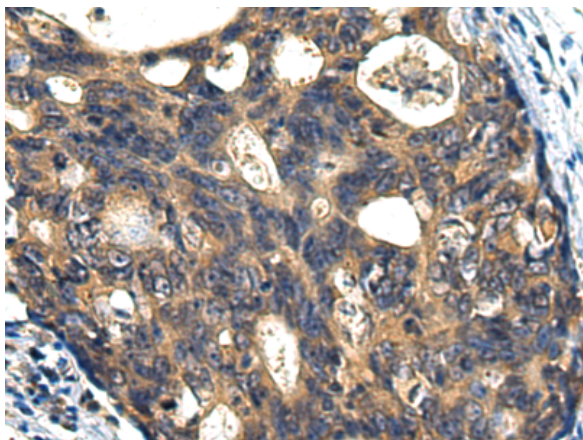
**Purification:** Antigen affinity purification

**Species Reactivity:** Human

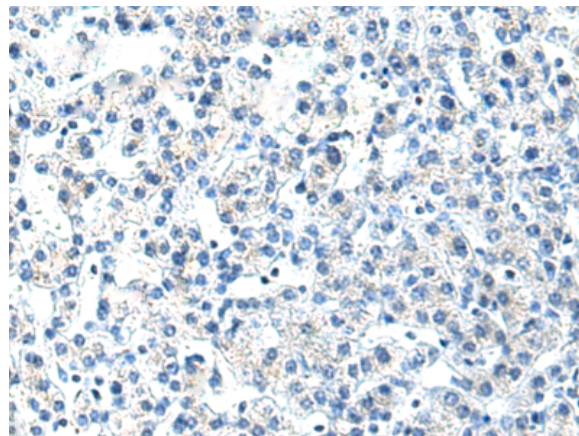
**Constituents:** PBS (without Mg<sup>2+</sup> and Ca<sup>2+</sup>), pH 7.4, 150 mM NaCl, 0.05% Sodium Azide and 40% glycerol

**Research Areas:** Neuroscience

**Storage & Shipping:** Store at -20°C. Avoid repeated freezing and thawing

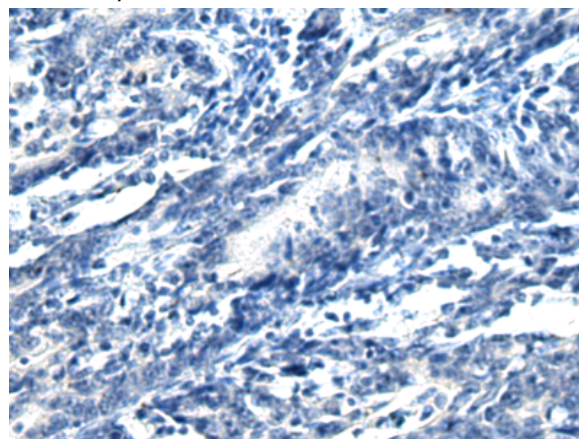


Immunohistochemistry analysis of paraffin embedded Human colorectal cancer tissue using 213747(GFRA4 Antibody) at a dilution of 1/20(Secreted).

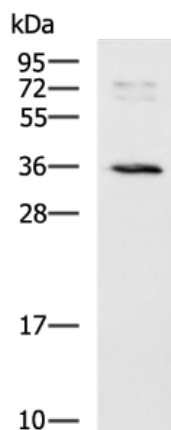


In comparison with the IHC on the left, the same paraffin-embedded Human colorectal cancer tissue is first treated with the synthetic peptide and then with 213747(Anti-GFRA4 Antibody) at dilution 1/20.

✘ The image on the left is immunohistochemistry of paraffin-embedded Human gastric cancer tissue using 213747(Anti-GFRA4 Antibody) at a dilution of 1/20.



In comparison with the IHC on the left, the same paraffin-embedded Human gastric cancer tissue is first treated with synthetic peptide and then with D160757(Anti-GFRA4 Antibody) at dilution 1/20.



Gel: 12%SDS-PAGE, Lysate: 40 µg;  
 Lane: 231 cell lysate;  
 Primary antibody: 213747(GFRA4 Antibody) at dilution 1/400;  
 Secondary antibody: HRP-conjugated Goat anti rabbit IgG at 1/5000 dilution;  
 Exposure time: 10 minutes



# Product Description

Pioneering GTPase and Oncogene Product Development since 2010

---