

## GHDC RABBIT PAB

**Cat.#:** S222079

**Product Name:** Anti-GHDC Rabbit Polyclonal Antibody

**Synonyms:** LGP1; D11LGP1

**UNIPROT ID:** Q8N2G8 (Gene Accession - NP\_115873 )

**Background:** GHDC, also known as LGP1, is a GH3 domain-containing protein that is highly expressed in normal mammary tissues and mammary tumors. GHDC is primarily located in the nuclear envelope. In mouse, its gene is located on chromosome 11 adjacent to the STAT3/5 locus. Little is known of the function of this protein.

**Immunogen:** Synthetic peptide of human GHDC

**Applications:** ELISA, IHC

**Recommended Dilutions:** IHC: 50-300; ELISA: 5000-10000

**Host Species:** Rabbit

**Clonality:** Rabbit Polyclonal

**Isotype:** Immunogen-specific rabbit IgG

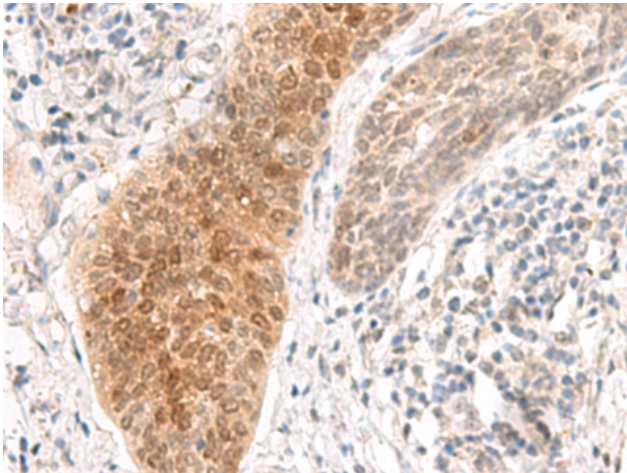
**Purification:** Antigen affinity purification

**Species Reactivity:** Human

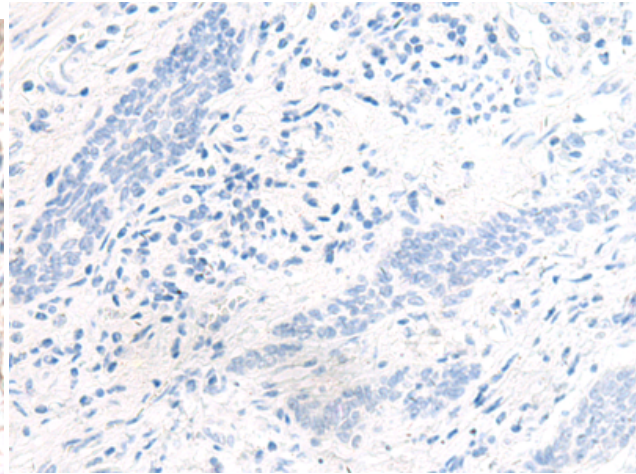
**Constituents:** PBS (without Mg<sup>2+</sup> and Ca<sup>2+</sup>), pH 7.4, 150 mM NaCl, 0.05% Sodium Azide and 40% glycerol

**Research Areas:** Cell Biology

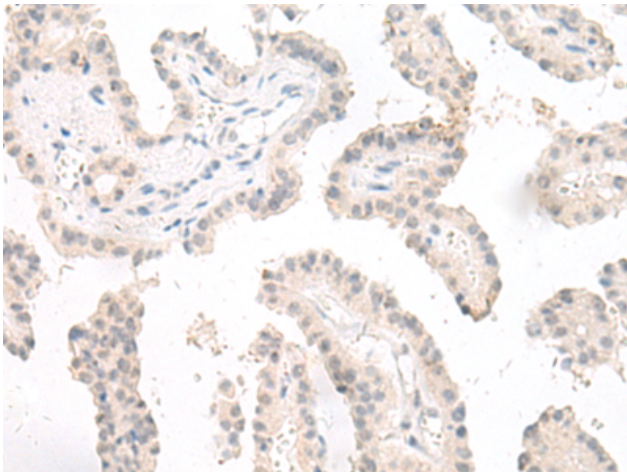
**Storage & Shipping:** Store at -20°C. Avoid repeated freezing and thawing



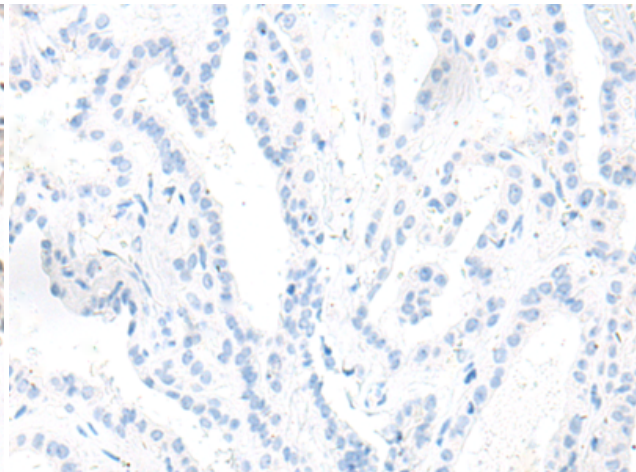
Immunohistochemistry analysis of paraffin embedded Human esophagus cancer tissue using 222079 (GHDC Antibody) at a dilution of 1/90 (Nucleus envelope).



In comparison with the IHC on the left, the same paraffin-embedded Human esophagus cancer tissue is first treated with the synthetic peptide and then with 222079 (Anti-GHDC Antibody) at dilution 1/90.



The image on the left is immunohistochemistry of paraffin-embedded Human thyroid cancer tissue using 222079 (Anti-GHDC Antibody) at a dilution of 1/90.



In comparison with the IHC on the left, the same paraffin-embedded Human thyroid cancer tissue is first treated with synthetic peptide and then with D263988 (Anti-GHDC Antibody) at dilution 1/90.