

GIMAP2 RABBIT PAB

Cat.#: S219070

Product Name: Anti-GIMAP2 Rabbit Polyclonal Antibody

Synonyms: IAN12; IMAP2; HIMAP2

UNIPROT ID: Q9UG22 (Gene Accession - BC013934)

Background: This gene encodes a protein belonging to the GTP-binding superfamily and to the immuno-associated nucleotide (IAN) subfamily of nucleotide-binding proteins. In humans, the IAN subfamily genes are located in a cluster at 7q36.1.

Immunogen: Fusion protein of human GIMAP2

Applications: ELISA, IHC

Recommended Dilutions: IHC: 50-300; ELISA: 5000-10000

Host Species: Rabbit

Clonality: Rabbit Polyclonal

Isotype: Immunogen-specific rabbit IgG

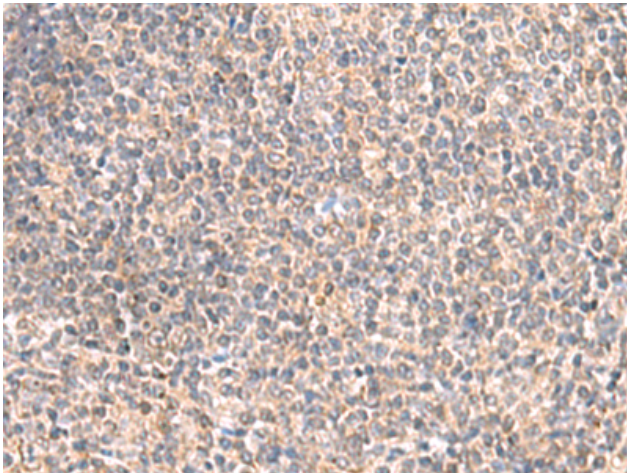
Purification: Antigen affinity purification

Species Reactivity: Human

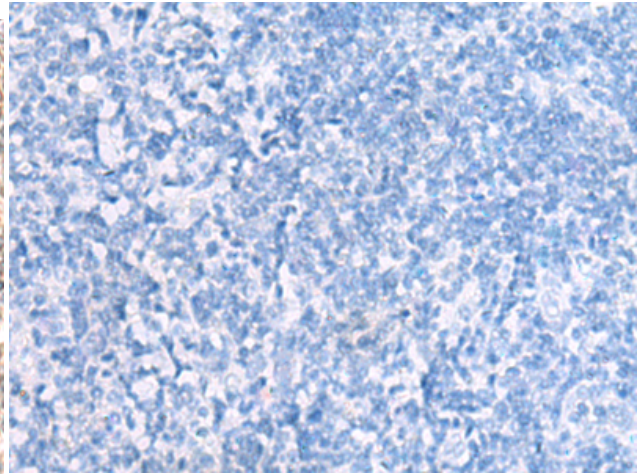
Constituents: PBS (without Mg²⁺ and Ca²⁺), pH 7.4, 150 mM NaCl, 0.05% Sodium Azide and 40% glycerol

Research Areas: Signal Transduction

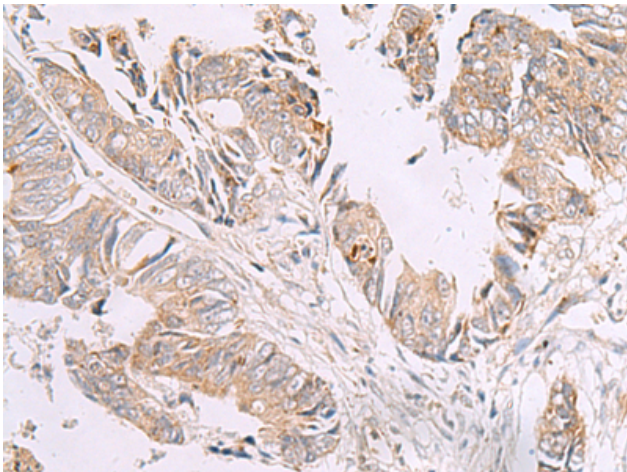
Storage & Shipping: Store at -20°C. Avoid repeated freezing and thawing



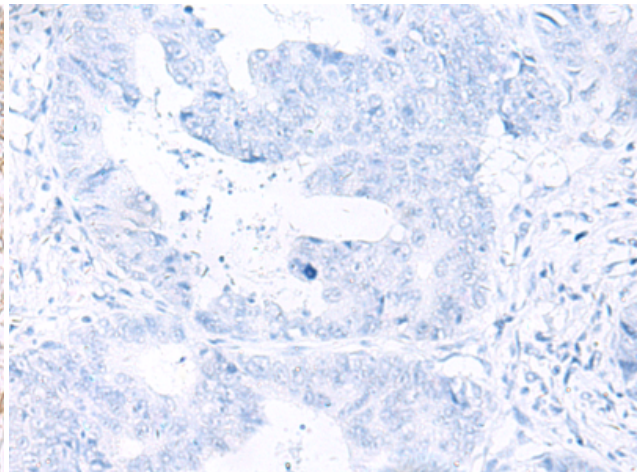
Immunohistochemistry analysis of paraffin embedded Human tonsil tissue using 219070(GIMAP2 Antibody) at a dilution of 1/55(Cytoplasm).



In comparison with the IHC on the left, the same paraffin-embedded Human tonsil tissue is first treated with the fusion protein and then with 219070(Anti-GIMAP2 Antibody) at dilution 1/55.



The image on the left is immunohistochemistry of paraffin-embedded Human colorectal cancer tissue using 219070(Anti-GIMAP2 Antibody) at a dilution of 1/55.



In comparison with the IHC on the left, the same paraffin-embedded Human colorectal cancer tissue is first treated with fusion protein and then with D225764(Anti-GIMAP2 Antibody) at dilution 1/55.