

GIPR(3G5) IGG1 CHIMERIC MAB

Cat.#: 28564

Product Name: Anti-GIPR(3G5) IgG1 Chimeric Monoclonal Antibody

Synonyms: PGQTL2

Description: Anti-GIPR antibody(3G5) IgG1 Chimeric Monoclonal Antibody

Background: This gene encodes a G-protein coupled receptor for gastric inhibitory polypeptide (GIP), which was originally identified as an activity in gut extracts that inhibited gastric acid secretion and gastrin release, but subsequently was demonstrated to stimulate insulin release in the presence of elevated glucose. Mice lacking this gene exhibit higher blood glucose levels with impaired initial insulin response after oral glucose load. Defect in this gene thus may contribute to the pathogenesis of diabetes. [provided by RefSeq, Oct 2011]

Applications: Flow Cyt

Recommended Dilutions: Flow Cyt 1/100

Host Species: Rabbit

Isotype: Rabbit/Human Fc chimeric IgG1

Purification: Purified from cell culture supernatant by affinity chromatography

Species Reactivity: Human GIPR

Constituents: Lyophilized from sterile PBS, pH 7.4. 5 % – 8% trehalose is added as protectants before lyophilization.

Storage & Shipping: Store at -20°C to -80°C for 12 months in lyophilized form. After reconstitution, if not intended for use within a month, aliquot and store at -80°C (Avoid repeated freezing and thawing).

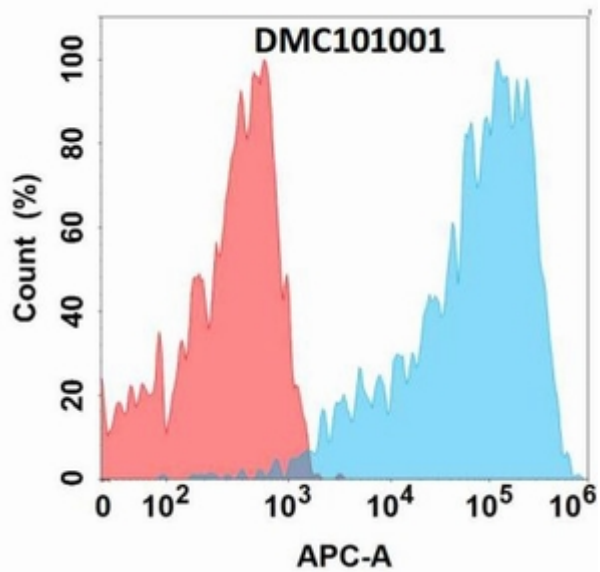


Figure 1. Flow cytometry analysis with Anti-GIPR (3G5) mAb on Expi293 cells transfected with human GIPR (Blue histogram) or Expi293 transfected with irrelevant protein (Red histogram).