

GKAP1 RABBIT PAB

Cat.#: S218864

Product Name: Anti-GKAP1 Rabbit Polyclonal Antibody

Synonyms: FKSG21; GKAP42

UNIPROT ID: Q5VSY0 (Gene Accession - BC014476)

Background: This gene encodes a protein that is highly similar to the mouse cGMP-dependent protein kinase anchoring protein 42kDa. The mouse protein has been found to localize with the Golgi and recruit cGMP-dependent protein kinase I alpha to the Golgi in mouse testes. It is thought to play a role in germ cell development. Transcript variants encoding different isoforms have been found for this gene.

Immunogen: Fusion protein of human GKAP1

Applications: ELISA, IHC

Recommended Dilutions: IHC: 90-450; ELISA: 5000-10000

Host Species: Rabbit

Clonality: Rabbit Polyclonal

Isotype: Immunogen-specific rabbit IgG

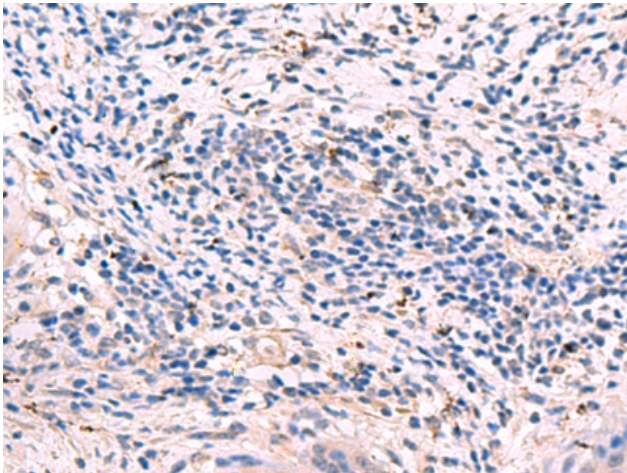
Purification: Antigen affinity purification

Species Reactivity: Human, Mouse, Rat

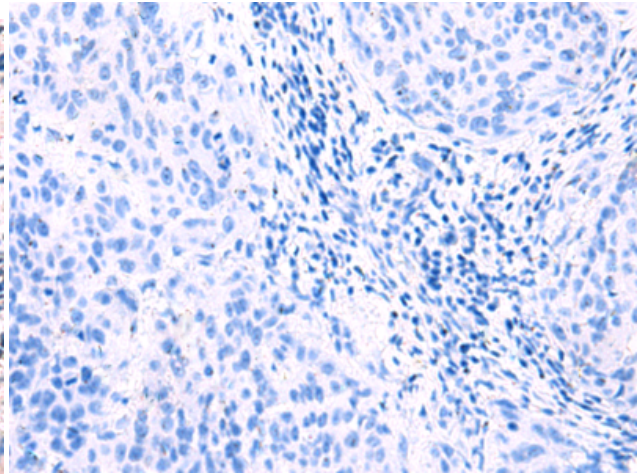
Constituents: PBS (without Mg²⁺ and Ca²⁺), pH 7.4, 150 mM NaCl, 0.05% Sodium Azide and 40% glycerol

Research Areas: Signal Transduction

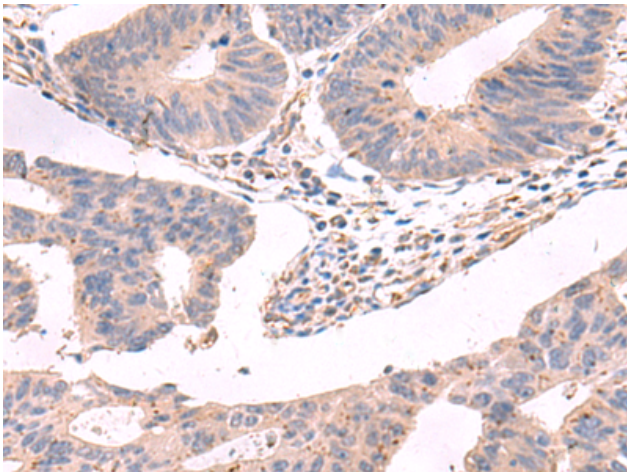
Storage & Shipping: Store at -20°C. Avoid repeated freezing and thawing



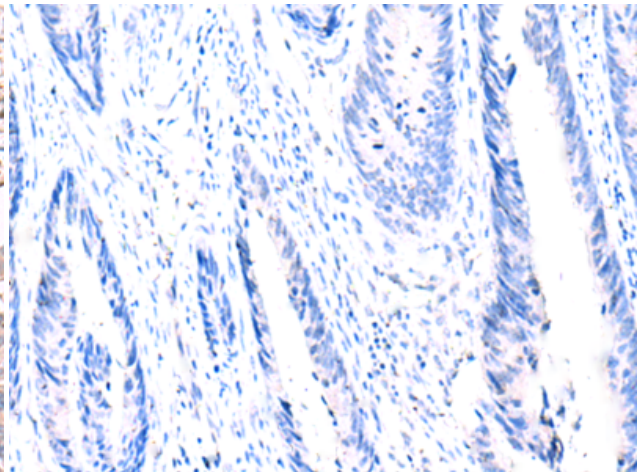
Immunohistochemistry analysis of paraffin embedded Human cervical cancer tissue using 218864(GKAPI Antibody) at a dilution of 1/95(Cytoplasm).



In comparison with the IHC on the left, the same paraffin-embedded Human cervical cancer tissue is first treated with the fusion protein and then with 218864(Anti-GKAPI Antibody) at dilution 1/95.



The image on the left is immunohistochemistry of paraffin-embedded Human colorectal cancer tissue using 218864(Anti-GKAPI Antibody) at a dilution of 1/95.



In comparison with the IHC on the left, the same paraffin-embedded Human colorectal cancer tissue is first treated with fusion protein and then with D225403(Anti-GKAPI Antibody) at dilution 1/95.