

GLB1 RABBIT PAB

Cat.#: N225077

Product Name: Anti-GLB1 Rabbit pAb

Synonyms: GLB1; ELNR1; Beta-galactosidase; Acid beta-galactosidase; Lactase; Elastin receptor 1

UNIPROT ID: P16278

Background: Cleaves beta-linked terminal galactosyl residues from gangliosides, glycoproteins, and glycosaminoglycans.

Immunogen: Synthesized peptide derived from the Internal region of human Galactosidase β .

Applications: WB,IHC-P,ELISA

Recommended Dilutions: WB: 1/500-1/1000 IHC: 1/50-1/100 ELISA: 1/10000

Host Species: Rabbit

Clonality: Rabbit Polyclonal

Clone ID: -

MW: Calculated MW: 76 kDa; Observed MW: 76 kDa

Isotype: IgG

Purification: Affinity Purified

Species Reactivity: Human

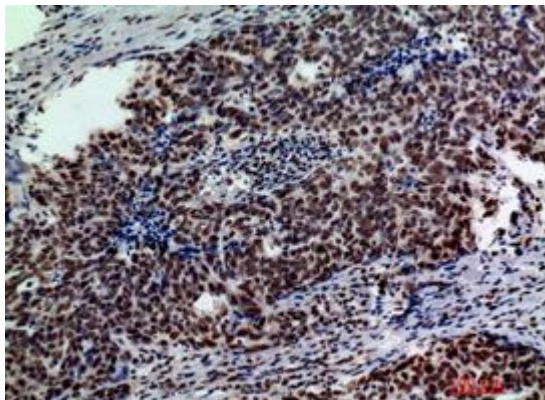
Conjugation: Unconjugated

Modification: Unmodified

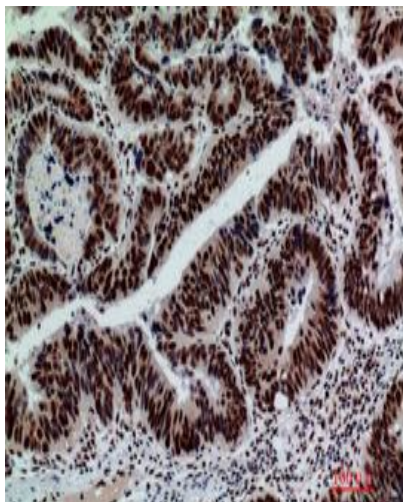
Constituents: PBS (without Mg^{2+} and Ca^{2+}), pH 7.3 containing 50% glycerol, 0.5% BSA and 0.02% sodium azide

Research Areas: Tags & Cell Markers

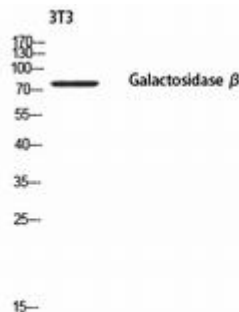
Storage & Shipping: Store at $-20^{\circ}C$. Avoid repeated freezing and thawing



Immunohistochemistry analysis of paraffin-embedded Human breast cancer using GLB1 antibody. High-pressure and temperature Sodium Citrate pH 6.0 was used for antigen retrieval.



Immunohistochemistry analysis of paraffin-embedded Human colon cancer using GLB1 antibody. High-pressure and temperature Sodium Citrate pH 6.0 was used for antigen retrieval.



Western blot analysis of GLB1 in 3T3 lysates using GLB1 antibody.