

## GLI3 RABBIT MAB

**Cat.#:** N262277

**Product Name:** Anti-GLI3 Rabbit Monoclonal Antibody

**Synonyms:** GLI3-190; GLI3FL; GLI3-83; GLI3 C-terminally truncated form

**UNIPROT ID:** Q5IS56

**Background:** Has a dual function as a transcriptional activator and a repressor of the sonic hedgehog (Shh) pathway, and plays a role in limb development.

**Immunogen:** Recombinant protein of Gli3

**Applications:** WB, ICC/IF

**Recommended Dilutions:** WB: 1/500-1/1000 IF: 1/50-1/200

**Host Species:** Rabbit

**Clonality:** Rabbit Monoclonal

**Clone ID:** R08-2B9

**MW:** Calculated MW: 170 kDa; Observed MW: 200 kDa

**Isotype:** IgG

**Purification:** Affinity Purified

**Species Reactivity:** Human

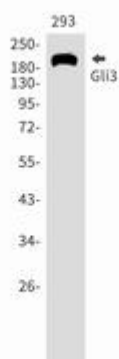
**Conjugation:** Unconjugated

**Modification:** Unmodified

**Constituents:** PBS (without Mg<sup>2+</sup> and Ca<sup>2+</sup>), pH 7.3 containing 50% glycerol, 0.5% BSA and 0.02% sodium azide

**Research Areas:** Epigenetics and Nuclear Signaling

**Storage & Shipping:** Store at -20°C. Avoid repeated freezing and thawing



Western blot analysis of Gli3 in 293 lysates using GLI3 antibody.



# Product Description

Pioneering GTPase and Oncogene Product Development since 2010

---