

## GLP2R RABBIT PAB

**Cat.#:** S216535

**Product Name:** Anti-GLP2R Rabbit Polyclonal Antibody

**Synonyms:**

**UNIPROT ID:** O95838 (Gene Accession - BC096262 )

**Background:** This gene encodes a G protein-coupled receptor that is closely related to the glucagon receptor and binds to glucagon-like peptide-2 (GLP2). Signalling through GLP2 stimulates intestinal growth and increases villus height in the small intestine, concomitant with increased crypt cell proliferation and decreased enterocyte apoptosis.

**Immunogen:** Fusion protein of human GLP2R

**Applications:** ELISA, IHC

**Recommended Dilutions:** IHC: 50-200; ELISA: 5000-10000

**Host Species:** Rabbit

**Clonality:** Rabbit Polyclonal

**Isotype:** Immunogen-specific rabbit IgG

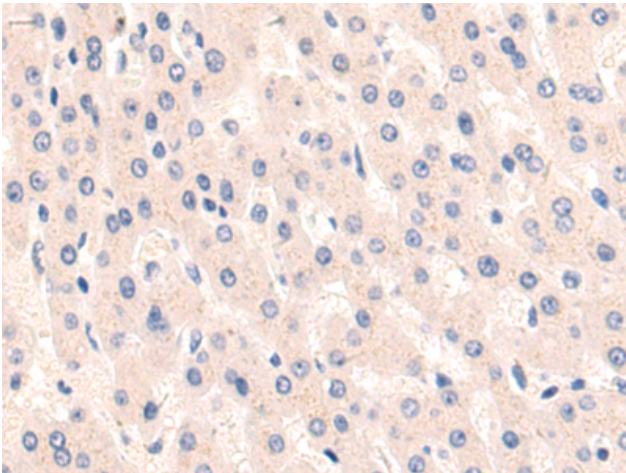
**Purification:** Antigen affinity purification

**Species Reactivity:** Human

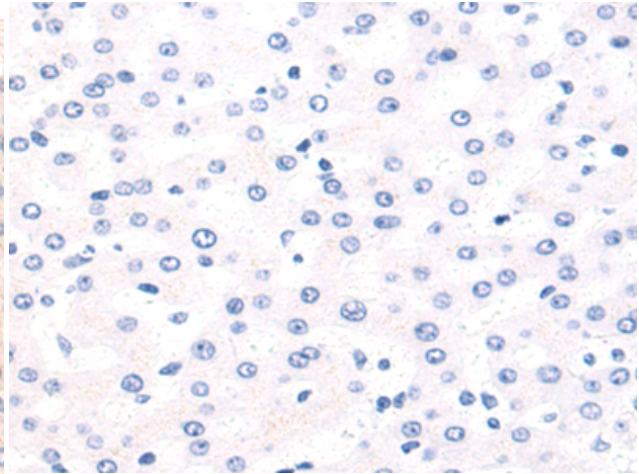
**Constituents:** PBS (without Mg<sup>2+</sup> and Ca<sup>2+</sup>), pH 7.4, 150 mM NaCl, 0.05% Sodium Azide and 40% glycerol

**Research Areas:** Signal Transduction, Cancer

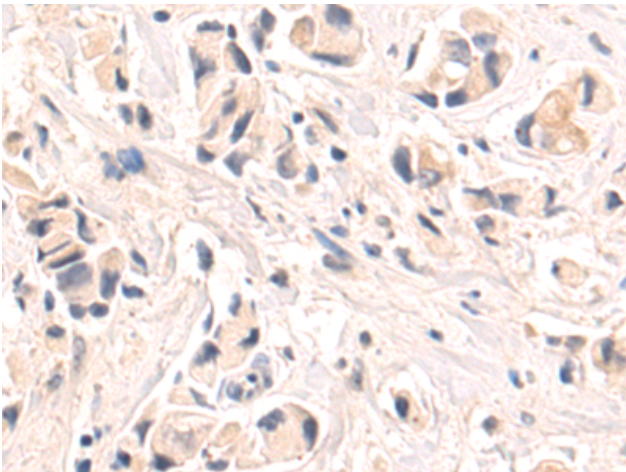
**Storage & Shipping:** Store at -20°C. Avoid repeated freezing and thawing



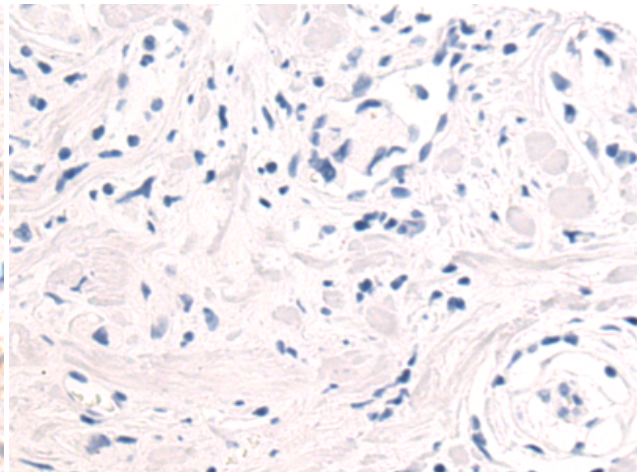
Immunohistochemistry analysis of paraffin embedded Human liver cancer tissue using 216535 (GLP2R Antibody) at a dilution of 1/75 (Cytoplasm).



In comparison with the IHC on the left, the same paraffin-embedded Human liver cancer tissue is first treated with the fusion protein and then with 216535 (Anti-GLP2R Antibody) at dilution 1/75.



The image on the left is immunohistochemistry of paraffin-embedded Human breast cancer tissue using 216535 (Anti-GLP2R Antibody) at a dilution of 1/75.



In comparison with the IHC on the left, the same paraffin-embedded Human breast cancer tissue is first treated with fusion protein and then with D220699 (Anti-GLP2R Antibody) at dilution 1/75.