

GLUTAMATE RECEPTOR 2/3 RABBIT PAB

Cat.#: N225938

Product Name: Anti-Glutamate Receptor 2/3 Rabbit pAb

Synonyms: GluR K2; GluR K3; GLURB; GLURC; GRIA2; GRIA3

UNIPROT ID: P42262/P42263

Background: Ion channels activated by glutamate are typically divided into two classes. Those sensitive to N-methyl-D-aspartate (NMDA) are designated NMDA receptors (NMDAR) while those activated by α -amino-3-hydroxy-5-methyl-4-isoxalone propionic acid (AMPA) are known as AMPA receptors (AMPA).

Immunogen: A synthesized peptide derived from human GluR2+GluR3

Applications: WB,IP

Recommended Dilutions: WB: 1/500-1/1000 IP: 1/20

Host Species: Rabbit

Clonality: Rabbit Polyclonal

Clone ID: -

MW: Calculated MW: 99 kDa; Observed MW: 99 kDa

Isotype: IgG

Purification: Affinity Chromatography

Species Reactivity: Human,Mouse,Rat

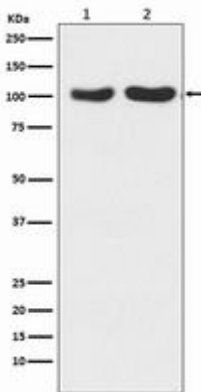
Conjugation: Unconjugated

Modification: Unmodified

Constituents: PBS (without Mg²⁺ and Ca²⁺), pH 7.3 containing 50% glycerol, 0.5% BSA and 0.02% sodium azide

Research Areas: Neuroscience Glutamate Receptor

Storage & Shipping: Store at -20°C. Avoid repeated freezing and thawing



Western blot analysis of GluR2+GluR3 in (1) Human fetal brain lysates; (2) mouse brain lysates using Glutamate Receptor 2/3 antibody.