

GLUTAMINASE RABBIT MAB

Cat.#: N262281

Product Name: Anti-Glutaminase Rabbit Monoclonal Antibody

Synonyms: Glutaminase kidney isoform; GLS; GLS1; KGA; K-glutaminase; GAM; GAC; Glutaminase C; L-glutamine amidohydrolase

UNIPROT ID: O94925

Background: Catalyzes the first reaction in the primary pathway for the renal catabolism of glutamine. Plays a role in maintaining acid-base homeostasis. Regulates the levels of the neurotransmitter glutamate in the brain. Isoform 2 lacks catalytic activity. Isoform 1 and isoform 3 are activated by phosphate. Inhibited by BPTES. BPTES binds between subunits and favors dissociation of the tetramer into dimers.

Immunogen: Recombinant protein of human Glutaminase C

Applications: WB, ICC/IF, IP

Recommended Dilutions: WB: 1/500-1/1000 IF: 1/50-1/200 IP: 1/20

Host Species: Rabbit

Clonality: Rabbit Monoclonal

Clone ID: R08-3D8

MW: Calculated MW: 73 kDa; Observed MW: 68 kDa

Isotype: IgG

Purification: Affinity Purified

Species Reactivity: Human, Mouse, Rat

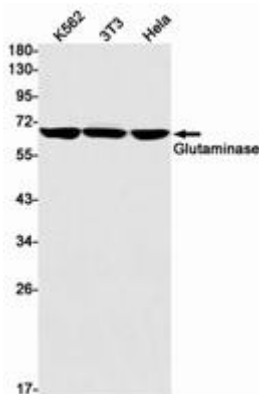
Conjugation: Unconjugated

Modification: Unmodified

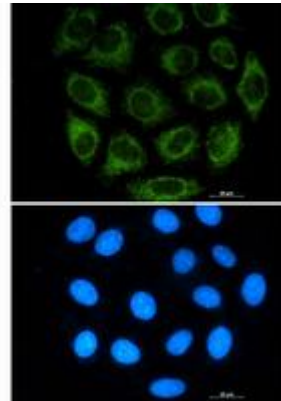
Constituents: PBS (without Mg²⁺ and Ca²⁺), pH 7.3 containing 50% glycerol, 0.5% BSA and 0.02% sodium azide

Research Areas: Neuroscience, Glutamatergic Neurons

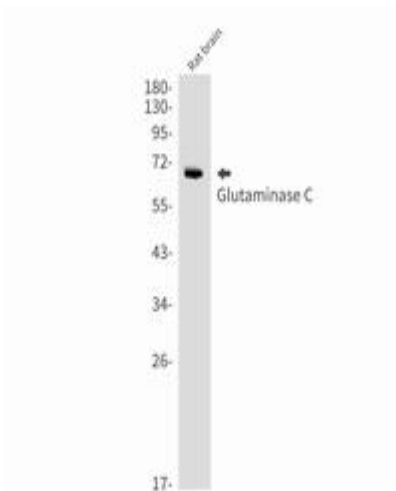
Storage & Shipping: Store at -20°C. Avoid repeated freezing and thawing



Western blot analysis of Glutaminase in K562, 3T3, HeLa lysates using Glutaminase antibody



Immunocytochemistry analysis of Glutaminase (green) in A549 using Glutaminase antibody, and DAPI (blue).



Western blot analysis of Glutaminase C in rat brain lysates using Glutaminase C antibody.