

GLUTATHIONE REDUCTASE RABBIT MAB

Cat.#: N262284

Product Name: Anti-Glutathione Reductase Rabbit Monoclonal Antibody

Synonyms: GR; HEL-75; HEL-S-122m

UNIPROT ID: P00390

Background: Maintains high levels of reduced glutathione in the cytosol.

Immunogen: A synthetic peptide of human Glutathione Reductase

Applications: WB,IP

Recommended Dilutions: WB: 1/500-1/1000 IP: 1/20

Host Species: Rabbit

Clonality: Rabbit Monoclonal

Clone ID: R08-2E4

MW: Calculated MW: 56 kDa; Observed MW: 51 kDa

Isotype: IgG

Purification: Affinity Purified

Species Reactivity: Human

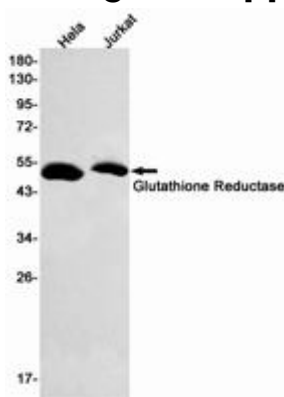
Conjugation: Unconjugated

Modification: Unmodified

Constituents: PBS (without Mg²⁺ and Ca²⁺), pH 7.3 containing 50% glycerol, 0.5% BSA and 0.02% sodium azide

Research Areas: Signal Transduction

Storage & Shipping: Store at -20°C. Avoid repeated freezing and thawing



Western blot analysis of Glutathione Reductase in HeLa, Jurkat lysates using Glutathione Reductase antibody.