

GLUTATHIONE SYNTHETASE RABBIT MAB

Cat.#: N262287

Product Name: Anti-Glutathione Synthetase Rabbit Monoclonal Antibody

Synonyms: Glutathione synthase; Glutathione synthetase; GSH S; GSH synthetase; GSH-S; GSHS; GSS; HEL-S-64p; HEL-S-88n

UNIPROT ID: P48637

Background: Sulfur metabolism; glutathione biosynthesis; glutathione from L-cysteine and L-glutamate: step 2/2.

Immunogen: A synthetic peptide of human Glutathione Synthetase

Applications: WB,IHC-F,IHC-P,ICC/IF

Recommended Dilutions: WB: 1/500-1/1000 IHC: 1/50-1/100 IF: 1/50-1/200

Host Species: Rabbit

Clonality: Rabbit Monoclonal

Clone ID: R07-5G5

MW: Calculated MW: 52 kDa; Observed MW: 52 kDa

Isotype: IgG

Purification: Affinity Purified

Species Reactivity: Human,Mouse,Rat

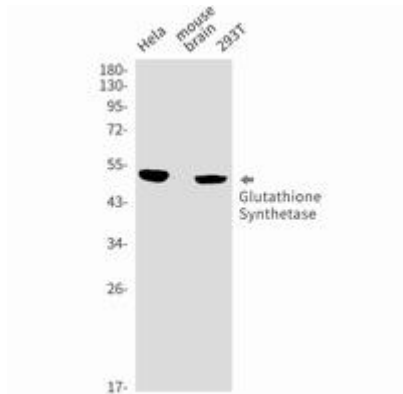
Conjugation: Unconjugated

Modification: Unmodified

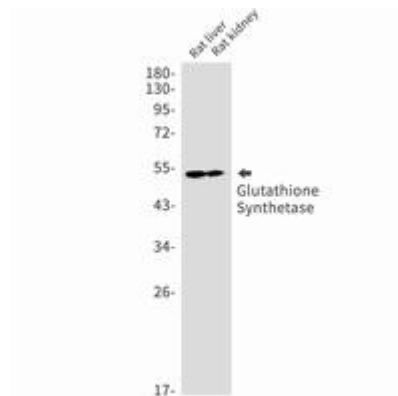
Constituents: PBS (without Mg²⁺ and Ca²⁺), pH 7.3 containing 50% glycerol, 0.5% BSA and 0.02% sodium azide

Research Areas: Signal Transduction

Storage & Shipping: Store at -20°C. Avoid repeated freezing and thawing



Western blot analysis of Glutathione Synthetase in HeLa, mouse brain, 293T, Jurkat lysates using Glutathione Synthetase antibody.



Western blot analysis of Glutathione Synthetase in rat kidney, rat liver lysates using Glutathione Synthetase antibody.