

GLYCOGEN SYNTHASE 1 RABBIT MAB

Cat.#: N262289

Product Name: Anti-Glycogen Synthase 1 Rabbit Monoclonal Antibody

Synonyms: GYS1; GYS; Glycogen [starch] synthase; muscle

UNIPROT ID: P13807

Background: Transfers the glycosyl residue from UDP-Glc to the non-reducing end of alpha-1,4-glucan. Allosteric activation by glucose-6-phosphate. Phosphorylation reduces the activity towards UDP-glucose. When in the non-phosphorylated state, glycogen synthase does not require glucose-6-phosphate as an allosteric activator; when phosphorylated it does.

Immunogen: A synthetic peptide of human Glycogen synthase 1

Applications: WB, ICC/IF, IP

Recommended Dilutions: WB: 1/500-1/1000 IF: 1/50-1/200 IP: 1/20

Host Species: Rabbit

Clonality: Rabbit Monoclonal

Clone ID: R02-2F3

MW: Calculated MW: 84 kDa; Observed MW: 84 kDa

Isotype: IgG

Purification: Affinity Purified

Species Reactivity: Human, Rat

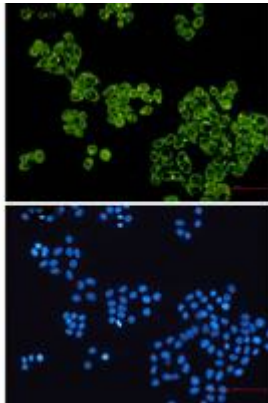
Conjugation: Unconjugated

Modification: Unmodified

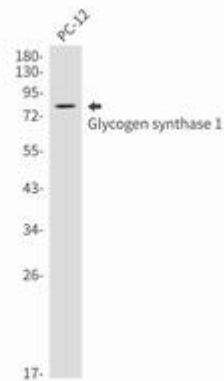
Constituents: PBS (without Mg²⁺ and Ca²⁺), pH 7.3 containing 50% glycerol, 0.5% BSA and 0.02% sodium azide

Research Areas: Signal Transduction

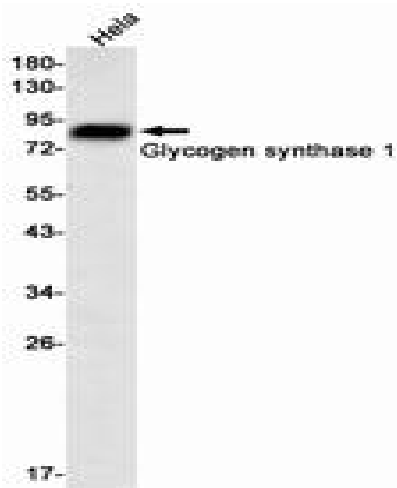
Storage & Shipping: Store at -20°C. Avoid repeated freezing and thawing



Immunocytochemistry analysis of Glycogen synthase 1 (green) in HeLa using Glycogen synthase 1 antibody, and DAPI (blue)



Western blot analysis of Glycogen synthase 1 in PC-12 lysates using Glycogen Synthase 1 antibody.



Western blot analysis of Glycogen synthase 1 in HeLa lysates using Glycogen synthase 1 antibody.