

## GLYCOPHORIN C RABBIT MAB

**Cat.#:** N261640

**Product Name:** Anti-Glycophorin C Rabbit Monoclonal Antibody

**Synonyms:** GYPC; CD236; CD236R; GE; GPC; GYPD

**UNIPROT ID:** P04921

**Background:** This protein is a minor sialoglycoprotein in human erythrocyte membranes. The blood group Gerbich antigens and receptors for Plasmodium falciparum merozoites are most likely located within the extracellular domain.

**Immunogen:** A synthetic peptide of human Glycophorin C

**Applications:** WB, ICC/IF, IP

**Recommended Dilutions:** WB: 1/500-1/1000 IF: 1/50-1/200 IP: 1/20

**Host Species:** Rabbit

**Clonality:** Rabbit Monoclonal

**Clone ID:** R04-8F4

**MW:** Calculated MW: 14 kDa; Observed MW: 43 kDa

**Isotype:** IgG

**Purification:** Affinity Purified

**Species Reactivity:** Human

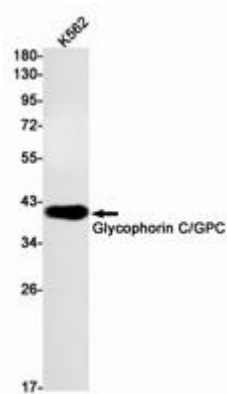
**Conjugation:** Unconjugated

**Modification:** Unmodified

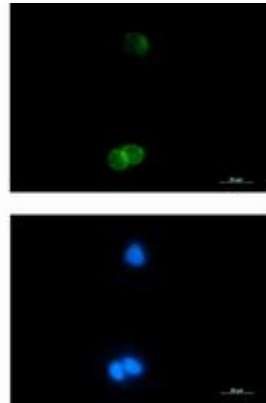
**Constituents:** PBS (without Mg<sup>2+</sup> and Ca<sup>2+</sup>), pH 7.3 containing 50% glycerol, 0.5% BSA and 0.02% sodium azide

**Research Areas:** Cardiovascular

**Storage & Shipping:** Store at -20°C. Avoid repeated freezing and thawing



Western blot analysis of Glycophorin C/GPC in K562 lysates using Glycophorin C/GPC antibody.



Immunocytochemistry analysis of Glycophorin C (green) in K562 using Glycophorin C antibody, and DAPI (blue).