

## GNA12 RABBIT PAB

**Cat.#:** S216103

**Product Name:** Anti-GNA12 Rabbit Polyclonal Antibody

**Synonyms:** RMP; gep; NNX3

**UNIPROT ID:** Q03113 (Gene Accession - NP\_031379 )

**Background:** Guanine nucleotide-binding proteins (G proteins) are modulators or transducers in various transmembrane signaling systems. G proteins are composed of 3 subunits; alpha, beta and gamma. The alpha chain contains the guanine nucleotide binding site.

**Immunogen:** Synthetic peptide of human GNA12

**Applications:** ELISA, IHC

**Recommended Dilutions:** IHC: Oct-50; ELISA: 5000-10000

**Host Species:** Rabbit

**Clonality:** Rabbit Polyclonal

**Isotype:** Immunogen-specific rabbit IgG

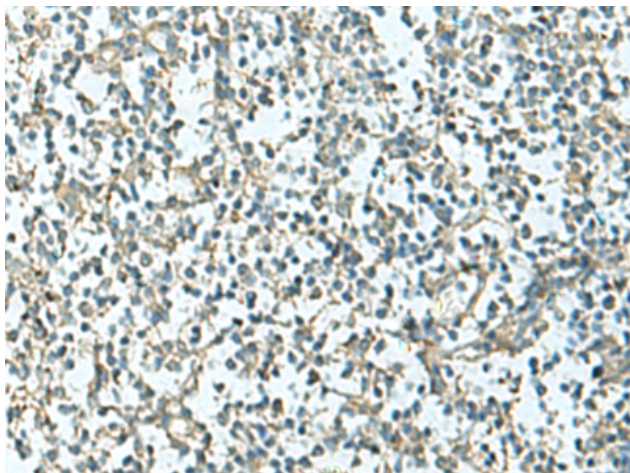
**Purification:** Antigen affinity purification

**Species Reactivity:** Human, Mouse, Rat

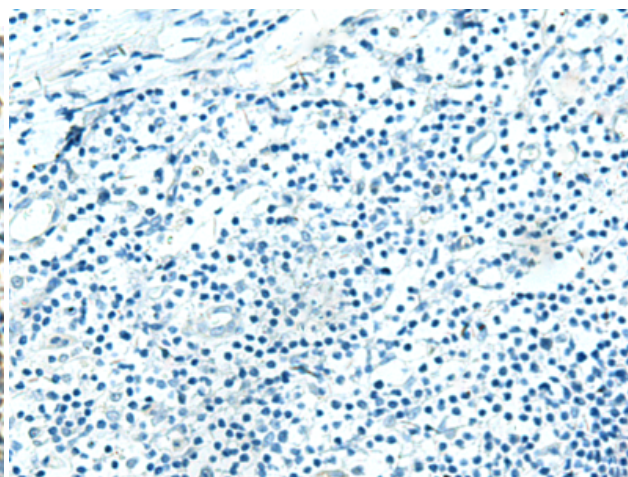
**Constituents:** PBS (without Mg<sup>2+</sup> and Ca<sup>2+</sup>), pH 7.4, 150 mM NaCl, 0.05% Sodium Azide and 40% glycerol

**Research Areas:** Signal Transduction

**Storage & Shipping:** Store at -20°C. Avoid repeated freezing and thawing



Immunohistochemistry analysis of paraffin embedded Human tonsil tissue using 216103(GNA12 Antibody) at a dilution of 1/20(Cytoplasm).



In comparison with the IHC on the left, the same paraffin-embedded Human tonsil tissue is first treated with the synthetic peptide and then with 216103(Anti-GNA12 Antibody) at dilution 1/20.