

GOLGA7 RABBIT PAB

Cat.#: S218960

Product Name: Anti-GOLGA7 Rabbit Polyclonal Antibody

Synonyms: GCPI6; GOLGA7A; HSPC041; GOLGA3AP1

UNIPROT ID: Q7Z5G4 (Gene Accession - BC012032)

Background: May be involved in protein transport from Golgi to cell surface. The ZDHHC9-GOLGA7 complex is a palmitoyltransferase specific for HRAS and NRAS.

Immunogen: Fusion protein of human GOLGA7

Applications: ELISA, WB, IHC

Recommended Dilutions: IHC: 50-300;WB: 1000-5000;ELISA: 5000-10000

Host Species: Rabbit

Clonality: Rabbit Polyclonal

Isotype: Immunogen-specific rabbit IgG

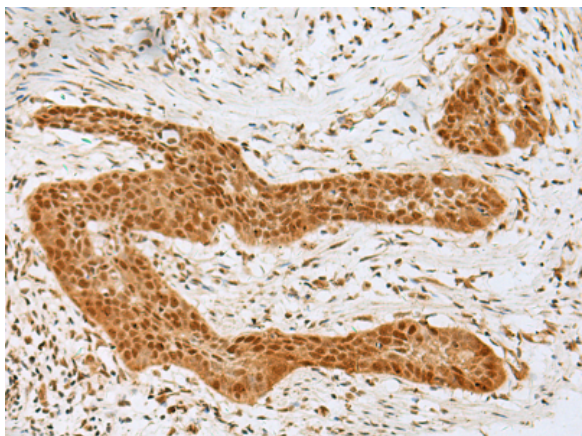
Purification: Antigen affinity purification

Species Reactivity: Human, Mouse, Rat

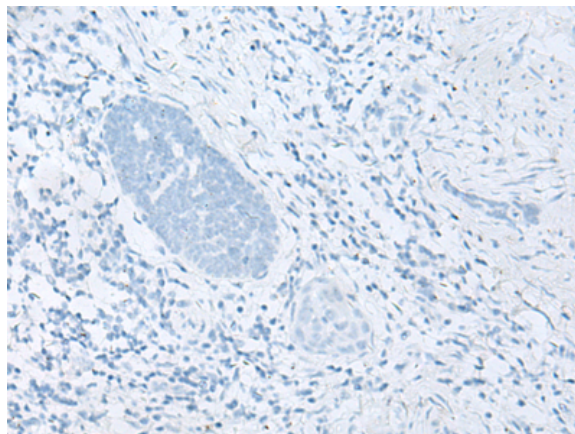
Constituents: PBS (without Mg²⁺ and Ca²⁺), pH 7.4, 150 mM NaCl, 0.05% Sodium Azide and 40% glycerol

Research Areas: Signal Transduction

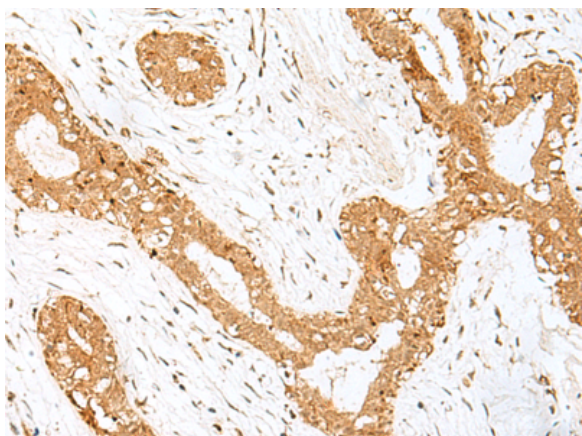
Storage & Shipping: Store at -20°C. Avoid repeated freezing and thawing



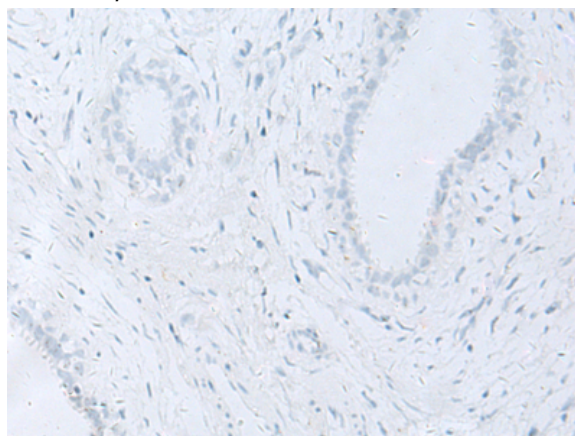
Immunohistochemistry analysis of paraffin-embedded Human esophagus cancer tissue using 218960 (Anti-GOLGA7 Antibody) at a dilution of 1/40 (Cytoplasm and Nucleus).



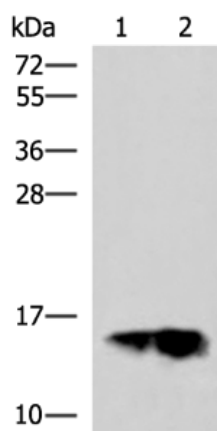
In comparison with the IHC on the left, the same paraffin-embedded Human esophagus cancer tissue is first treated with the fusion protein and then with 218960 (Anti-GOLGA7 Antibody) at dilution 1/40.



The image on the left is immunohistochemistry of paraffin-embedded Human breast cancer tissue using 218960 (Anti-GOLGA7 Antibody) at a dilution of 1/40.



In comparison with the IHC on the left, the same paraffin-embedded Human breast cancer tissue is first treated with fusion protein and then with 218960 (Anti-GOLGA7 Antibody) at dilution 1/40.



Gel: 12% SDS-PAGE, Lysate: 40 µg;
 Lane 1-2: Human plasma solution and Human placenta tissue lysates;
 Primary antibody: 218960 (Anti-GOLGA7 Antibody) at dilution 1/600;
 Secondary antibody: HRP-conjugated Goat anti rabbit IgG at 1/5000 dilution;
 Exposure time: 1 minute



Product Description

Pioneering GTPase and Oncogene Product Development since 2010
