

## GORAB RABBIT PAB

**Cat.#:** N225182

**Product Name:** Anti-GORAB Rabbit pAb

**Synonyms:** GORAB; NTKLBPI; SCYL1BPI; RAB6-interacting golgin; N-terminal kinase-like-binding protein 1; NTKL-BPI; NTKL-binding protein 1; hNTKL-BPI; SCY1-like 1-binding protein 1; SCYL1-BPI; SCYL1-binding protein 1

**UNIPROT ID:** Q5T7V8

**Background:** This gene encodes a member of the golgin family, a group of coiled-coil proteins localized to the Golgi. The encoded protein may function in the secretory pathway. The encoded protein, which also localizes to the cytoplasm, was identified by interactions with the N-terminal kinase-like protein, and thus it may function in mitosis. Mutations in this gene have been associated with geroderma osteodysplastica.

**Immunogen:** The antiserum was produced against synthesized peptide derived from the N-terminal region of human GORAB. AA range:1-50

**Applications:** WB,ELISA

**Recommended Dilutions:** WB: 1/500-1/1000 ELISA: 1/10000

**Host Species:** Rabbit

**Clonality:** Rabbit Polyclonal

**Clone ID:** -

**MW:** Calculated MW: 42 kDa; Observed MW: 45 kDa

**Isotype:** IgG

**Purification:** Affinity Purified

**Species Reactivity:** Human,Mouse,Rat

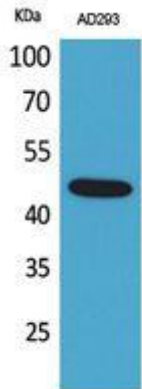
**Conjugation:** Unconjugated

**Modification:** Unmodified

**Constituents:** PBS (without Mg<sup>2+</sup> and Ca<sup>2+</sup>), pH 7.3 containing 50% glycerol, 0.5% BSA and 0.02% sodium azide

**Research Areas:** Signal Transduction

**Storage & Shipping:** Store at -20°C. Avoid repeated freezing and thawing



Western blot analysis of GORAB in AD293 lysates using GORAB antibody.