

GOT2 RABBIT PAB

Cat.#: S217490

Product Name: Anti-GOT2 Rabbit Polyclonal Antibody

Synonyms: KAT4; DEE82; KATIV; KYAT4; mitAAT

UNIPROT ID: P00505 (Gene Accession - BC000525)

Background: Glutamic-oxaloacetic transaminase is a pyridoxal phosphate-dependent enzyme which exists in cytoplasmic and inner-membrane mitochondrial forms, GOT1 and GOT2, respectively. GOT plays a role in amino acid metabolism and the urea and tricarboxylic acid cycles. The two enzymes are homodimeric and show close homology. Two transcript variants encoding different isoforms have been found for this gene.

Immunogen: Fusion protein of human GOT2

Applications: ELISA, WB, IHC

Recommended Dilutions: IHC: 50-200;WB: 1000-5000;ELISA: 5000-10000

Host Species: Rabbit

Clonality: Rabbit Polyclonal

Isotype: Immunogen-specific rabbit IgG

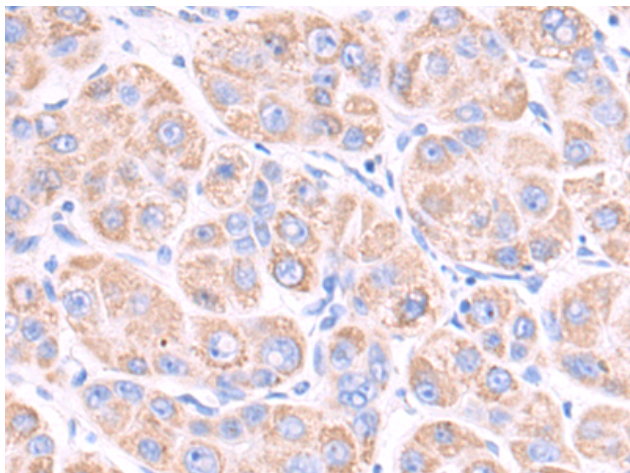
Purification: Antigen affinity purification

Species Reactivity: Human, Mouse, Rat

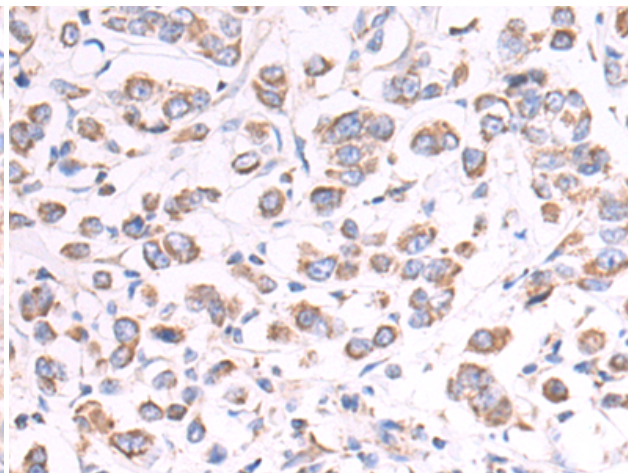
Constituents: PBS (without Mg²⁺ and Ca²⁺), pH 7.4, 150 mM NaCl, 0.05% Sodium Azide and 40% glycerol

Research Areas: Metabolism, Cancer

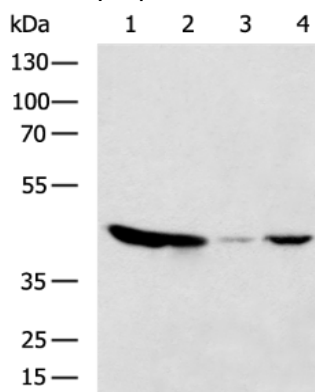
Storage & Shipping: Store at -20°C. Avoid repeated freezing and thawing



Immunohistochemistry analysis of paraffin-embedded Human liver cancer tissue using 217490(GOT2 Antibody) at a dilution of 1/70(Cytoplasm).



Immunohistochemistry analysis of paraffin-embedded Human breast cancer tissue using 217490(Anti-GOT2 Antibody) at a dilution of 1/70.



Gel: 8%SDS-PAGE, Lysate: 40 µg;
 Lane 1-4: Mouse heart tissue, 293T cell, Mouse fetal liver tissue, Mouse brain tissue lysates;
 Primary antibody: 217490(GOT2 Antibody) at dilution 1/1200;
 Secondary antibody: HRP-conjugated Goat anti rabbit IgG at 1/5000 dilution;
 Exposure time: 1 second