

GP2 RABBIT PAB

Cat.#: S213058

Product Name: Anti-GP2 Rabbit Polyclonal Antibody

Synonyms: ZAP75

UNIPROT ID: P55259 (Gene Accession - BC032693)

Background: This gene encodes an integral membrane protein that is secreted from intracellular zymogen granules and associates with the plasma membrane via glycosylphosphatidylinositol (GPI) linkage. The encoded protein binds pathogens such as enterobacteria, thereby playing an important role in the innate immune response. The C-terminus of this protein is related to the C-terminus of the protein encoded by the neighboring gene, uromodulin (UMOD). Alternative splicing results in multiple transcript variants.

Immunogen: Fusion protein of human GP2

Applications: ELISA, IHC

Recommended Dilutions: IHC: 200-400; ELISA: 5000-10000

Host Species: Rabbit

Clonality: Rabbit Polyclonal

Isotype: Immunogen-specific rabbit IgG

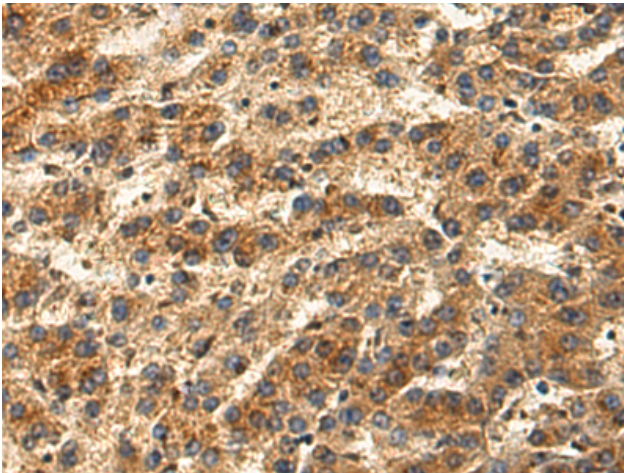
Purification: Antigen affinity purification

Species Reactivity: Human

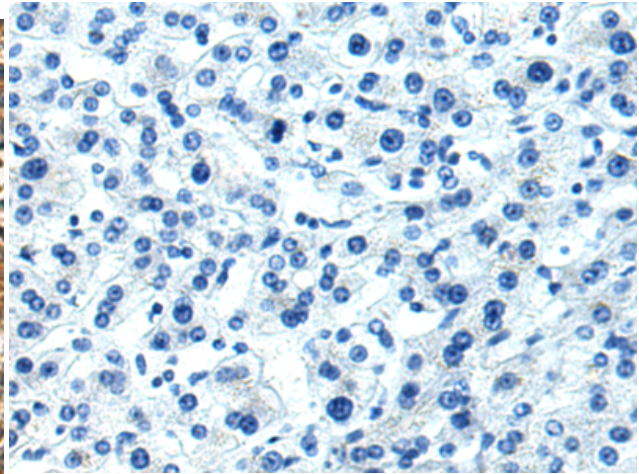
Constituents: PBS (without Mg²⁺ and Ca²⁺), pH 7.4, 150 mM NaCl, 0.05% Sodium Azide and 40% glycerol

Research Areas: Cell Biology

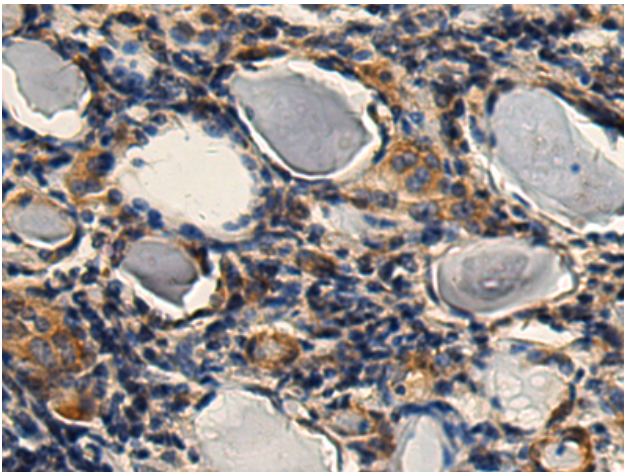
Storage & Shipping: Store at -20°C. Avoid repeated freezing and thawing



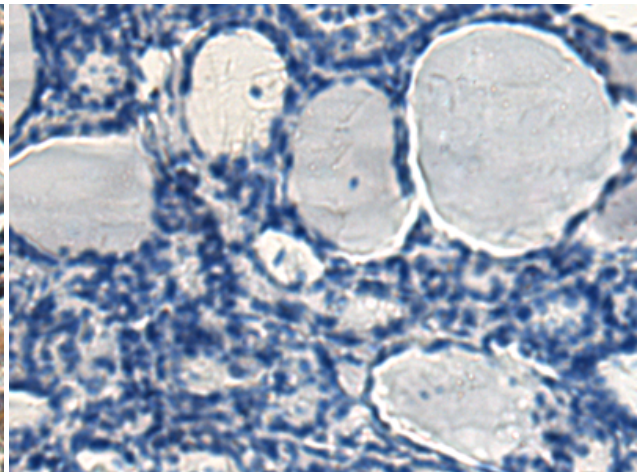
Immunohistochemistry analysis of paraffin embedded Human liver cancer tissue using 213058(GP2 Antibody) at a dilution of 1/200(Cytoplasm).



In comparison with the IHC on the left, the same paraffin-embedded Human liver cancer tissue is first treated with the fusion protein and then with 213058(Anti-GP2 Antibody) at dilution 1/200.



The image on the left is immunohistochemistry of paraffin-embedded Human thyroid cancer tissue using 213058(Anti-GP2 Antibody) at a dilution of 1/200.



In comparison with the IHC on the left, the same paraffin-embedded Human thyroid cancer tissue is first treated with fusion protein and then with D126552(Anti-GP2 Antibody) at dilution 1/200.