

## GPA33 RABBIT PAB

**Cat.#:** S216537

**Product Name:** Anti-GPA33 Rabbit Polyclonal Antibody

**Synonyms:** A33

**UNIPROT ID:** Q99795 (Gene Accession - BC069723 )

**Background:** The glycoprotein encoded by this gene is a cell surface antigen that is expressed in greater than 95% of human colon cancers. The open reading frame encodes a 319-amino acid polypeptide having a putative secretory signal sequence and 3 potential glycosylation sites. The predicted mature protein has a 213-amino acid extracellular region, a single transmembrane domain, and a 62-amino acid intracellular tail. The sequence of the extracellular region contains 2 domains characteristic of the CD2 subgroup of the immunoglobulin (Ig) superfamily.

**Immunogen:** Fusion protein of human GPA33

**Applications:** ELISA, WB, IHC

**Recommended Dilutions:** IHC: 50-200;WB: 1000-5000;ELISA: 5000-10000

**Host Species:** Rabbit

**Clonality:** Rabbit Polyclonal

**Isotype:** Immunogen-specific rabbit IgG

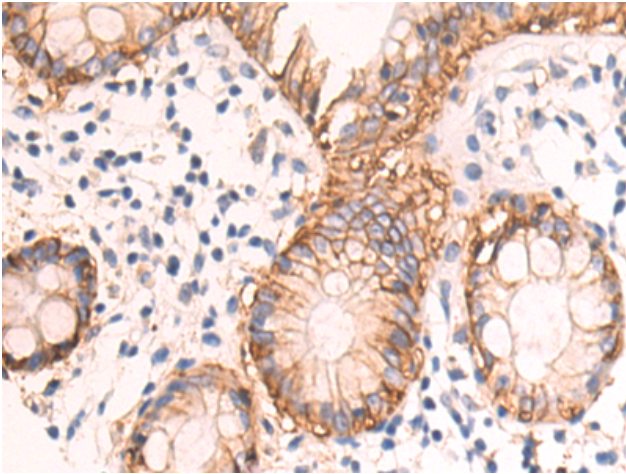
**Purification:** Antigen affinity purification

**Species Reactivity:** Human, Mouse

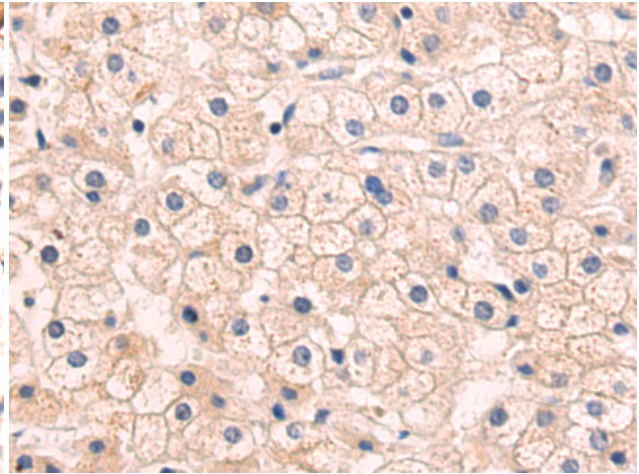
**Constituents:** PBS (without Mg<sup>2+</sup> and Ca<sup>2+</sup>), pH 7.4, 150 mM NaCl, 0.05% Sodium Azide and 40% glycerol

**Research Areas:** Cancer

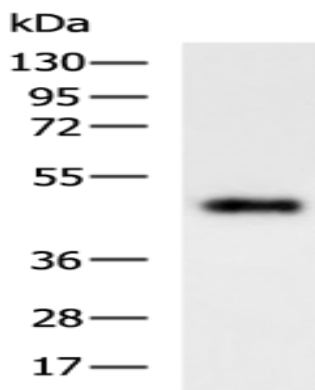
**Storage & Shipping:** Store at -20°C. Avoid repeated freezing and thawing



Immunohistochemistry analysis of paraffin-embedded Human colorectal cancer tissue using 216537(GPA33 Antibody) at a dilution of 1/70(Cytoplasm and Cell membrane).



Immunohistochemistry analysis of paraffin-embedded Human liver cancer tissue using 216537(Anti-GPA33 Antibody) at a dilution of 1/70.



Gel: 8%SDS-PAGE, Lysate: 40 µg;  
Lane: Mouse small intestines tissue lysate;  
Primary antibody: 216537(GPA33 Antibody) at dilution 1/1000;  
Secondary antibody: HRP-conjugated Goat anti rabbit IgG at 1/5000 dilution;  
Exposure time: 1 minute