

GPANK1 RABBIT PAB

Cat.#: S218350

Product Name: Anti-GPANK1 Rabbit Polyclonal Antibody

Synonyms: G5; BAT4; D6S54E; ANKRD59; GPATCH10

UNIPROT ID: O95872 (Gene Accession - BC008783)

Background: This gene is located in a cluster of HLA-B-associated transcripts, which is included in the human major histocompatibility complex III region. This gene encodes a protein which is thought to play a role in immunity. Multiple alternatively spliced variants, encoding the same protein, have been identified.

Immunogen: Fusion protein of human GPANK1

Applications: ELISA, IHC

Recommended Dilutions: IHC: 100-300; ELISA: 5000-10000

Host Species: Rabbit

Clonality: Rabbit Polyclonal

Isotype: Immunogen-specific rabbit IgG

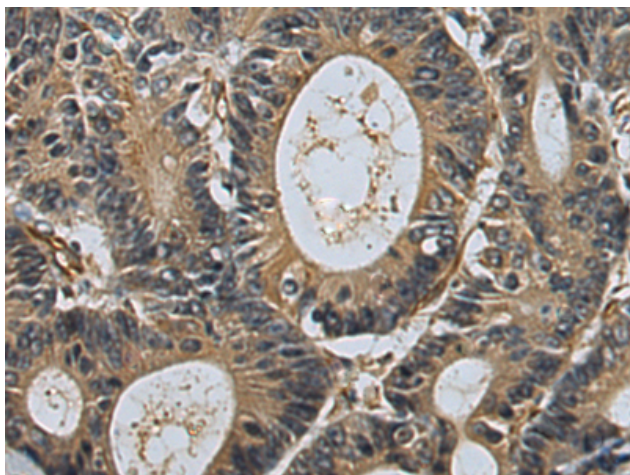
Purification: Antigen affinity purification

Species Reactivity: Human, Mouse

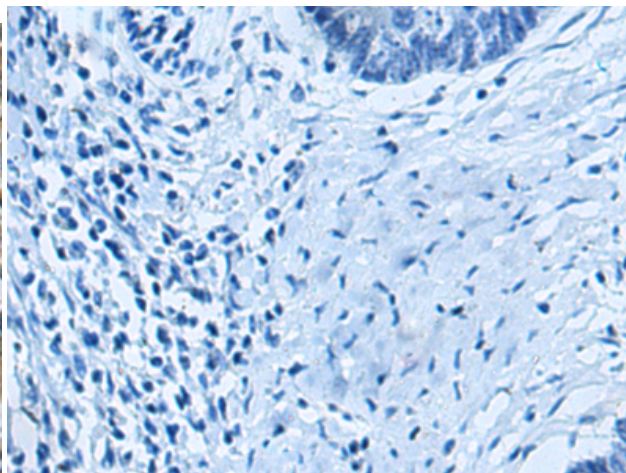
Constituents: PBS (without Mg²⁺ and Ca²⁺), pH 7.4, 150 mM NaCl, 0.05% Sodium Azide and 40% glycerol

Research Areas: Immunology

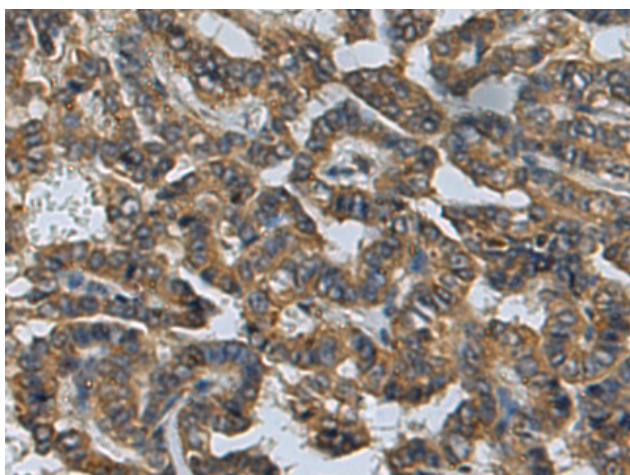
Storage & Shipping: Store at -20°C. Avoid repeated freezing and thawing



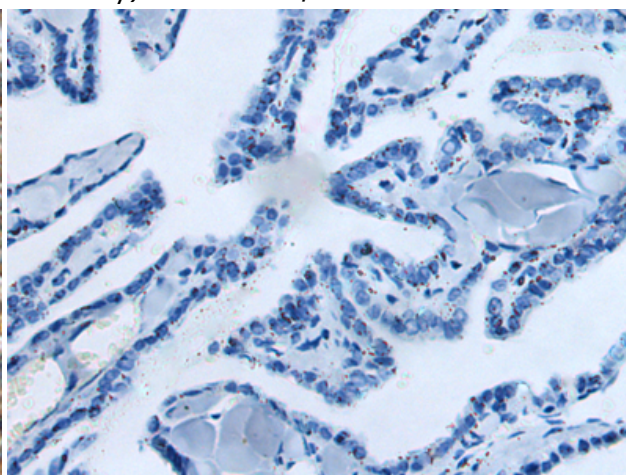
Immunohistochemistry analysis of paraffin embedded Human colorectal cancer tissue using 218350(GPANK1 Antibody) at a dilution of 1/110(Cytoplasm).



In comparison with the IHC on the left, the same paraffin-embedded Human colorectal cancer tissue is first treated with the fusion protein and then with 218350(Anti-GPANK1 Antibody) at dilution 1/110.



The image on the left is immunohistochemistry of paraffin-embedded Human thyroid cancer tissue using 218350(Anti-GPANK1 Antibody) at a dilution of 1/110.



In comparison with the IHC on the left, the same paraffin-embedded Human thyroid cancer tissue is first treated with fusion protein and then with D224231(Anti-GPANK1 Antibody) at dilution 1/110.