

GPBP1 RABBIT PAB

Cat.#: S212686

Product Name: Anti-GPBP1 Rabbit Polyclonal Antibody

Synonyms: GPBP; SSH6; VASCULIN

UNIPROT ID: Q86WP2 (Gene Accession - BC000267)

Background: This gene was originally isolated by subtractive hybridization of cDNAs expressed in atherosclerotic plaques with a thrombus, and was found to be expressed only in vascular smooth muscle cells. However, a shorter splice variant was found to be more ubiquitously expressed. This protein is suggested to play a role in the development of atherosclerosis. Studies in mice suggest that it may also function as a GC-rich promoter-specific trans-activating transcription factor. Several alternatively spliced transcript variants encoding different isoforms have been described for this gene.

Immunogen: Fusion protein of human GPBP1

Applications: ELISA, IHC

Recommended Dilutions: IHC: 50-200; ELISA: 5000-10000

Host Species: Rabbit

Clonality: Rabbit Polyclonal

Isotype: Immunogen-specific rabbit IgG

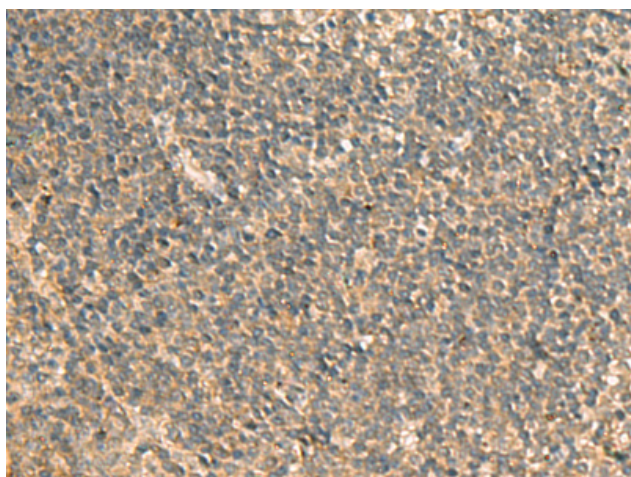
Purification: Antigen affinity purification

Species Reactivity: Human, Mouse

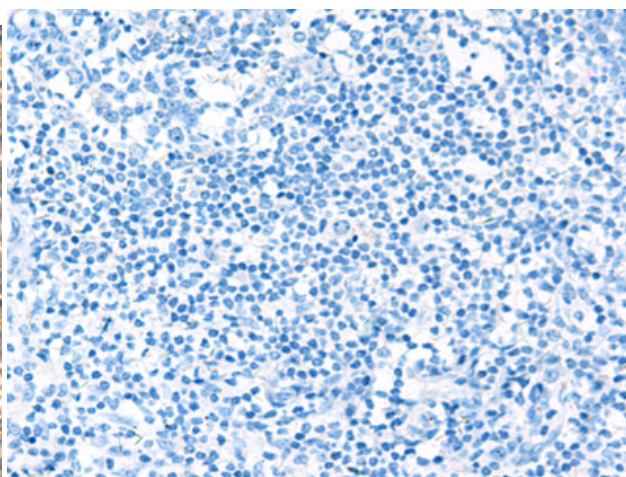
Constituents: PBS (without Mg²⁺ and Ca²⁺), pH 7.4, 150 mM NaCl, 0.05% Sodium Azide and 40% glycerol

Research Areas: Epigenetics and Nuclear Signaling

Storage & Shipping: Store at -20°C. Avoid repeated freezing and thawing



Immunohistochemistry analysis of paraffin embedded Human tonsil tissue using 212686(GPBP1 Antibody) at a dilution of 1/65(Cytoplasm).



In comparison with the IHC on the left, the same paraffin-embedded Human tonsil tissue is first treated with the fusion protein and then with 212686(Anti-GPBP1 Antibody) at dilution 1/65.