

## GPC6 RABBIT PAB

**Cat.#:** S210341

**Product Name:** Anti-GPC6 Rabbit Polyclonal Antibody

**Synonyms:** OMIMD1

**UNIPROT ID:** Q9Y625 (Gene Accession - BC106947 )

**Background:** The glypicans comprise a family of glycosylphosphatidylinositol-anchored heparan sulfate proteoglycans, and they have been implicated in the control of cell growth and cell division. The glypican encoded by this gene is a putative cell surface coreceptor for growth factors, extracellular matrix proteins, proteases and anti-proteases. Mutations in this gene are associated with omodysplasia 1.

**Immunogen:** Fusion protein of human GPC6

**Applications:** ELISA, WB, IHC

**Recommended Dilutions:** IHC: 50-100;WB: 500-2000;ELISA: 5000-10000

**Host Species:** Rabbit

**Clonality:** Rabbit Polyclonal

**Isotype:** Immunogen-specific rabbit IgG

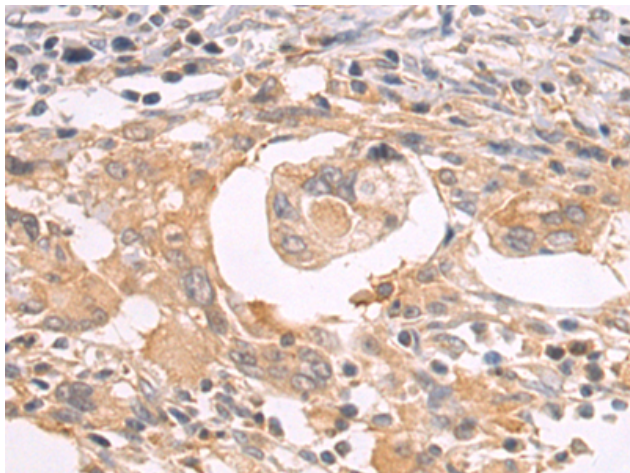
**Purification:** Antigen affinity purification

**Species Reactivity:** Human, Mouse

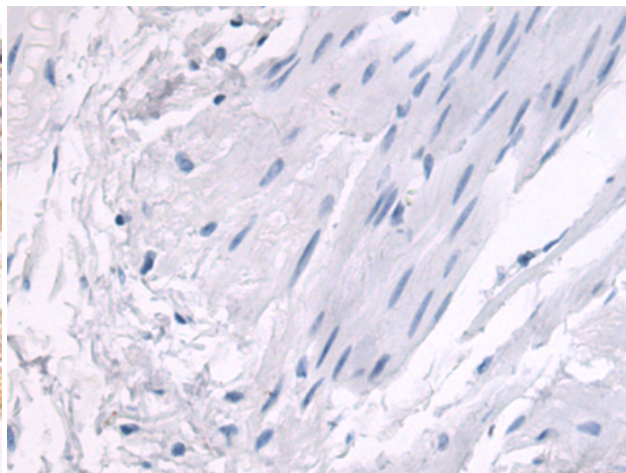
**Constituents:** PBS (without Mg<sup>2+</sup> and Ca<sup>2+</sup>), pH 7.4, 150 mM NaCl, 0.05% Sodium Azide and 40% glycerol

**Research Areas:** Signal Transduction

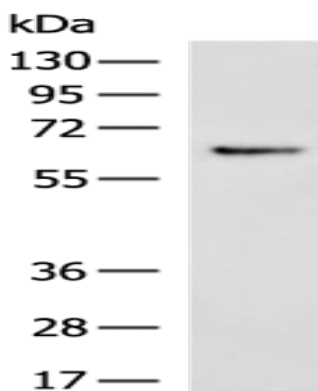
**Storage & Shipping:** Store at -20°C. Avoid repeated freezing and thawing



Immunohistochemistry analysis of paraffin embedded Human esophagus cancer tissue using 210341(GPC6 Antibody) at a dilution of 1/50(Cytoplasm).



In comparison with the IHC on the left, the same paraffin-embedded Human esophagus cancer tissue is first treated with the fusion protein and then with 210341(Anti-GPC6 Antibody) at dilution 1/50.



Gel: 8%SDS-PAGE, Lysate: 40  $\mu$ g;  
Lane: Mouse urinary bladder tissue lysate;  
Primary antibody: 210341(GPC6 Antibody) at dilution 1/400;  
Secondary antibody: HRP-conjugated Goat anti rabbit IgG at 1/5000 dilution;  
Exposure time: 10 seconds