

GPCPD1 RABBIT PAB

Cat.#: S219171

Product Name: Anti-GPCPD1 Rabbit Polyclonal Antibody

Synonyms: EDI3; GDE5; GDPD6; PREI4

UNIPROT ID: Q9NPB8 (Gene Accession - BC027588)

Background: May be involved in the negative regulation of skeletal muscle differentiation, independently of its glycerophosphocholine phosphodiesterase activity.

Immunogen: Fusion protein of human GPCPD1

Applications: ELISA, WB, IHC

Recommended Dilutions: IHC: 50-100;WB: 500-2000;ELISA: 5000-10000

Host Species: Rabbit

Clonality: Rabbit Polyclonal

Isotype: Immunogen-specific rabbit IgG

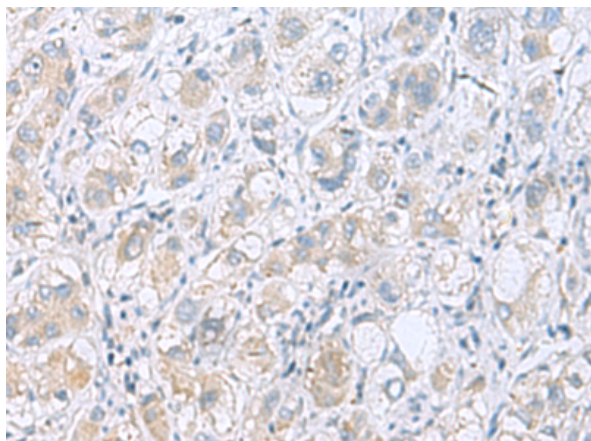
Purification: Antigen affinity purification

Species Reactivity: Human, Mouse, Rat

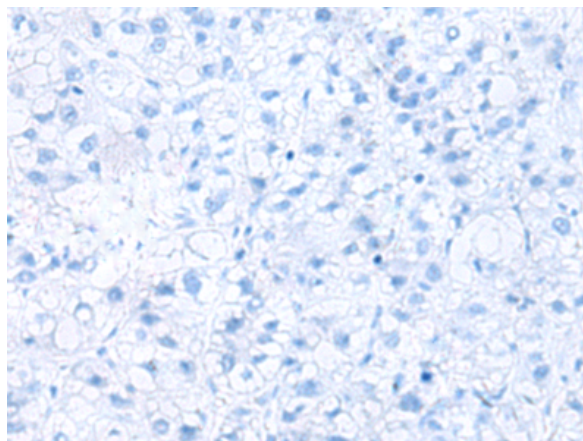
Constituents: PBS (without Mg²⁺ and Ca²⁺), pH 7.4, 150 mM NaCl, 0.05% Sodium Azide and 40% glycerol

Research Areas: Cell Biology

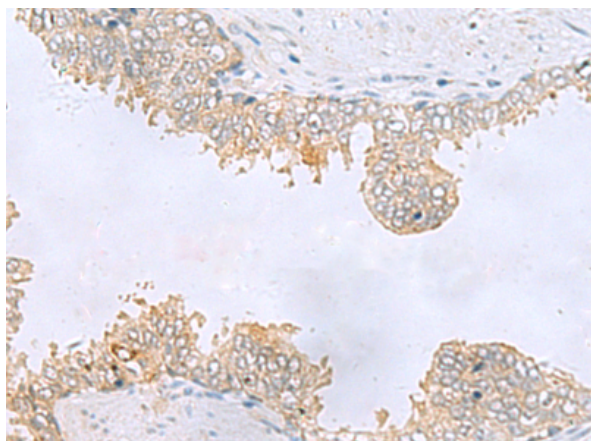
Storage & Shipping: Store at -20°C. Avoid repeated freezing and thawing



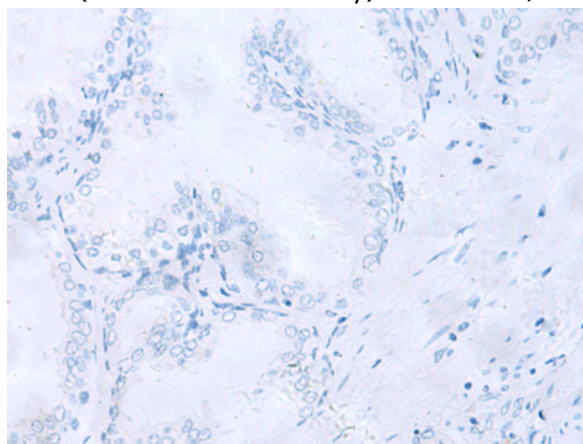
Immunohistochemistry analysis of paraffin embedded Human liver cancer tissue using 219171(GPCPD1 Antibody) at a dilution of 1/55(Cytoplasm).



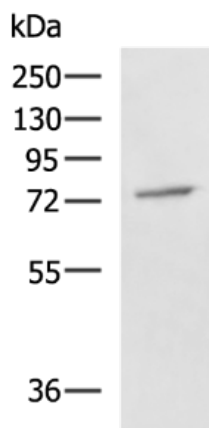
In comparison with the IHC on the left, the same paraffin-embedded Human liver cancer tissue is first treated with the fusion protein and then with 219171(Anti-GPCPD1 Antibody) at dilution 1/55.



The image on the left is immunohistochemistry of paraffin-embedded Human prostate cancer tissue using 219171(Anti-GPCPD1 Antibody) at a dilution of 1/55.



In comparison with the IHC on the left, the same paraffin-embedded Human prostate cancer tissue is first treated with fusion protein and then with D225967(Anti-GPCPD1 Antibody) at dilution 1/55.



Gel: 8%SDS-PAGE, Lysate: 40 µg;
 Lane: A549 cell lysate;
 Primary antibody: 219171(GPCPD1 Antibody) at dilution 1/800;
 Secondary antibody: HRP-conjugated Goat anti rabbit IgG at 1/5000 dilution;
 Exposure time: 50 seconds



Product Description

Pioneering GTPase and Oncogene Product Development since 2010
