

GPD2 RABBIT MAB

Cat.#: N262300

Product Name: Anti-GPD2 Rabbit Monoclonal Antibody

Synonyms: GDH2; GPDM; mGPDH

UNIPROT ID: P43304

Background: Glycerol-3-phosphate dehydrogenase, mitochondrial

Immunogen: A synthetic peptide of human GPD2

Applications: WB,IP

Recommended Dilutions: WB: 1/500-1/1000 IP: 1/20

Host Species: Rabbit

Clonality: Rabbit Monoclonal

Clone ID: R02-5B9

MW: Calculated MW: 81 kDa; Observed MW: 81 kDa

Isotype: IgG

Purification: Affinity Purified

Species Reactivity: Human,Mouse,Rat

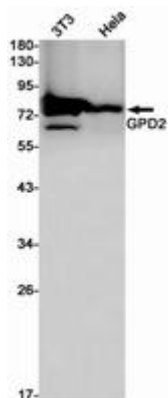
Conjugation: Unconjugated

Modification: Unmodified

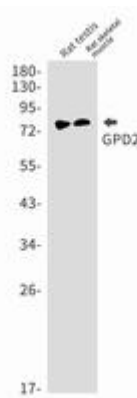
Constituents: PBS (without Mg²⁺ and Ca²⁺), pH 7.3 containing 50% glycerol, 0.5% BSA and 0.02% sodium azide

Research Areas: Tags & Cell Markers

Storage & Shipping: Store at -20°C. Avoid repeated freezing and thawing



Western blot analysis of GPD2 in K562, HeLa lysates using GPD2 antibody.



Western blot analysis of GPD2 in rat testis, rat skeletal muscle lysates using GPD2 antibody.



Product Description

Pioneering GTPase and Oncogene Product Development since 2010
