

GPKOW RABBIT PAB

Cat.#: S219141

Product Name: Anti-GPKOW Rabbit Polyclonal Antibody

Synonyms: T54; Spp2; GPATC5; GPATCH5

UNIPROT ID: Q92917 (Gene Accession - BC000397)

Background: This gene encodes a putative RNA-binding protein containing G-patch and KOW (Kyprides, Ouzounis, Woese) domains. The encoded protein interacts directly with protein kinase A and protein kinase X and is also found associated with the spliceosome.

Immunogen: Fusion protein of human GPKOW

Applications: ELISA, WB, IHC

Recommended Dilutions: IHC: 100-500;WB: 1000-5000;ELISA: 5000-10000

Host Species: Rabbit

Clonality: Rabbit Polyclonal

Isotype: Immunogen-specific rabbit IgG

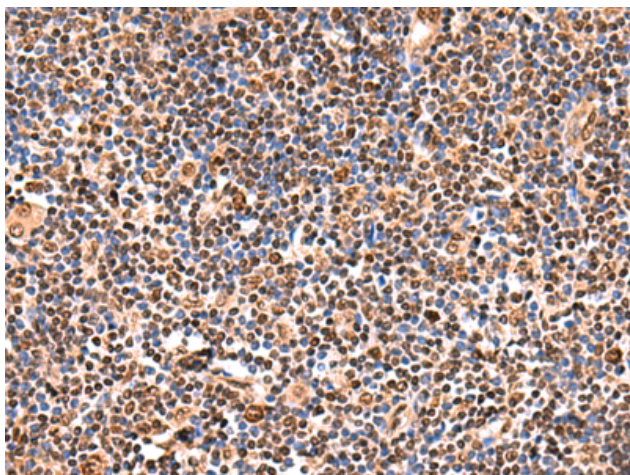
Purification: Antigen affinity purification

Species Reactivity: Human

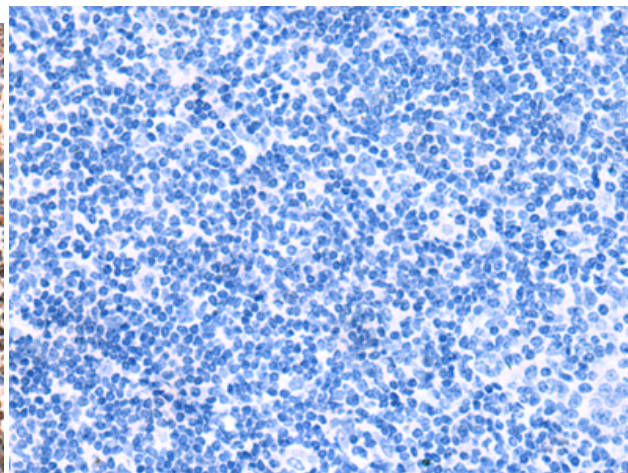
Constituents: PBS (without Mg²⁺ and Ca²⁺), pH 7.4, 150 mM NaCl, 0.05% Sodium Azide and 40% glycerol

Research Areas: Cell Biology

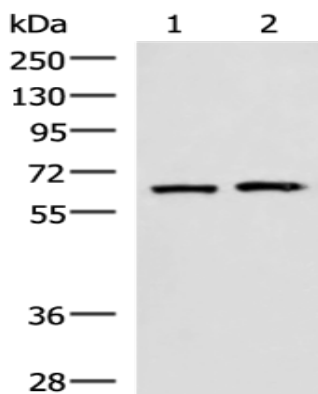
Storage & Shipping: Store at -20°C. Avoid repeated freezing and thawing



Immunohistochemistry analysis of paraffin embedded Human tonsil tissue using 219141(GPKOW Antibody) at a dilution of 1/140(Nucleus).



In comparison with the IHC on the left, the same paraffin-embedded Human tonsil tissue is first treated with the fusion protein and then with 219141(Anti-GPKOW Antibody) at dilution 1/140.



Gel: 8%SDS-PAGE, Lysate: 40 μ g;
Lane 1-2: 293T and Jurkat cell lysates;
Primary antibody: 219141(GPKOW Antibody) at dilution 1/2000;
Secondary antibody: HRP-conjugated Goat anti rabbit IgG at 1/5000 dilution;
Exposure time: 30 seconds