

GPR119 RABBIT PAB

Cat.#: S222100

Product Name: Anti-GPR119 Rabbit Polyclonal Antibody

Synonyms: GPCR2

UNIPROT ID: Q8TDV5 (Gene Accession - NP_848566)

Background: This gene encodes a member of the rhodopsin subfamily of G-protein-coupled receptors that is expressed in the pancreas and gastrointestinal tract. The encoded protein is activated by lipid amides including lysophosphatidylcholine and oleoylethanolamide and may be involved in glucose homeostasis. This protein is a potential drug target in the treatment of type 2 diabetes.

Immunogen: Synthetic peptide of human GPR119

Applications: ELISA, IHC

Recommended Dilutions: IHC: 40-200; ELISA: 5000-10000

Host Species: Rabbit

Clonality: Rabbit Polyclonal

Isotype: Immunogen-specific rabbit IgG

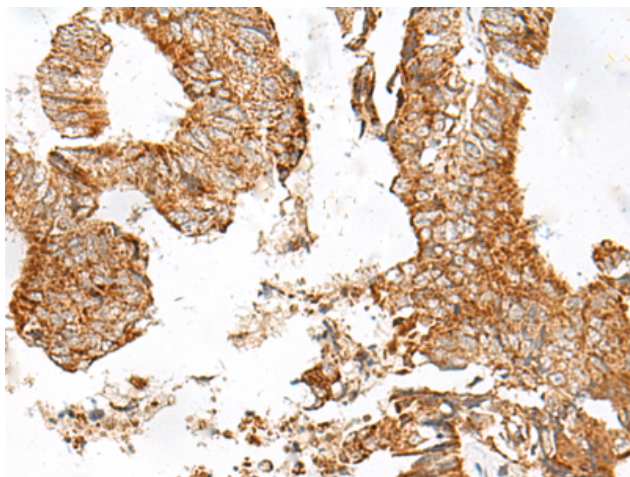
Purification: Antigen affinity purification

Species Reactivity: Human

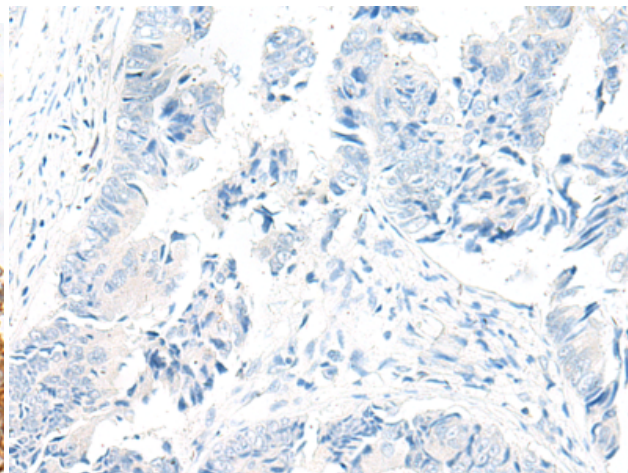
Constituents: PBS (without Mg²⁺ and Ca²⁺), pH 7.4, 150 mM NaCl, 0.05% Sodium Azide and 40% glycerol

Research Areas: Signal Transduction

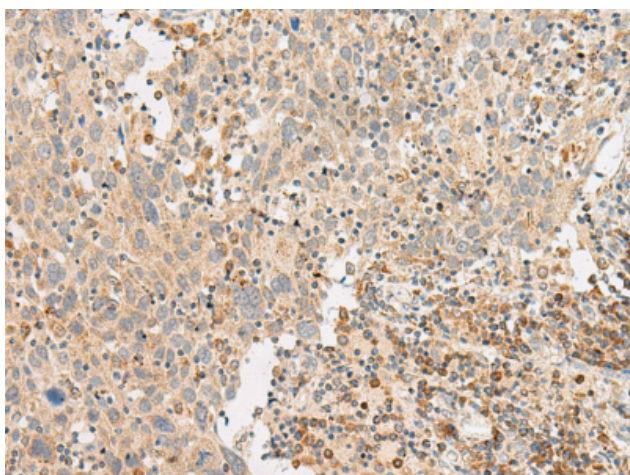
Storage & Shipping: Store at -20°C. Avoid repeated freezing and thawing



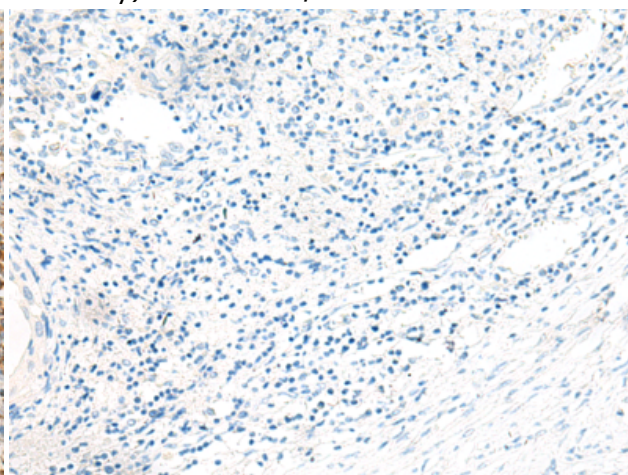
Immunohistochemistry analysis of paraffin embedded Human colorectal cancer tissue using 222100(GPR119 Antibody) at a dilution of 1/45(Cell membrane).



In comparison with the IHC on the left, the same paraffin-embedded Human colorectal cancer tissue is first treated with the synthetic peptide and then with 222100(Anti-GPR119 Antibody) at dilution 1/45.



The image on the left is immunohistochemistry of paraffin-embedded Human cervical cancer tissue using 222100(Anti-GPR119 Antibody) at a dilution of 1/45.



In comparison with the IHC on the left, the same paraffin-embedded Human cervical cancer tissue is first treated with synthetic peptide and then with D264021(Anti-GPR119 Antibody) at dilution 1/45.