

## GPR132 RABBIT PAB

**Cat.#:** N225094

**Product Name:** Anti-GPR132 Rabbit pAb

**Synonyms:** GPR132; G2A; Probable G-protein coupled receptor 132; G2 accumulation protein

**UNIPROT ID:** Q9UNW8

**Background:** May be a receptor for oxidized free fatty acids derived from linoleic and arachidonic acids such as 9-hydroxyoctadecadienoic acid (9-HODE).

**Immunogen:** The antiserum was produced against synthesized peptide derived from human GPR132. AA range:293-342

**Applications:** WB,ICC/IF,ELISA

**Recommended Dilutions:** WB: 1/500-1/1000 IF: 1/50-1/200 ELISA: 1/10000

**Host Species:** Rabbit

**Clonality:** Rabbit Polyclonal

**Clone ID:** -

**MW:** Calculated MW: 42 kDa; Observed MW: 42 kDa

**Isotype:** IgG

**Purification:** Affinity Purified

**Species Reactivity:** Human,Mouse,Monkey

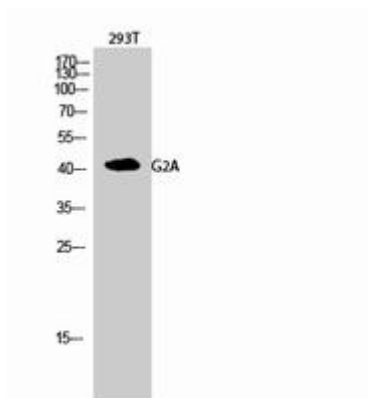
**Conjugation:** Unconjugated

**Modification:** Unmodified

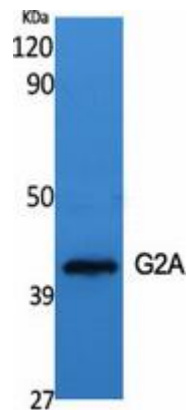
**Constituents:** PBS (without Mg<sup>2+</sup> and Ca<sup>2+</sup>), pH 7.3 containing 50% glycerol, 0.5% BSA and 0.02% sodium azide

**Research Areas:** Signal Transduction

**Storage & Shipping:** Store at -20°C. Avoid repeated freezing and thawing



Western blot analysis of GPR132 in 293T lysates using G2A antibody.



Western blot analysis of GPR132 in various lysates using GPR132 antibody.